



WV-CP500

WV-CW504

Super Dynamic 5 Camera Series

Security & Sound Systems Business Unit

Overview

WV-CP500 series: Super Dynamic 5 Day-Night Camera



WV-CW504 series: Super Dynamic 5 Vandal Resistant Fixed Dome Camera

Super Dynamic 5: Superior image by fusion of Super Dynamic,ABS (Adaptive Black Stretch) and i-VMD.

High resolution: 650 TV lines (Color HIGH mode), 700 TV lines (B/W mode)

High sensitivity: 0.1 lux allows color images even when the lighting is dim.

i-VMD: Intruder detection, Object Abandonment, Object Removal

ABF automatically adjusts back focus by adjusting the CCD position.

Adaptive DNR: 2D-DNR for motion area and 3D-DNR for static area are effectively combined.

Vandal and Weather resistant (CW504 series only)

CP500 series LineUP

WV-CP500



NTSC

WV-CP500 (120 V AC)

WV-CP504 (24 V AC or 12 V DC)

WV-CP504



PAL

WV-CP500 (220 ~ 240 V AC)

WV-CP504 (24 V AC or 12 V DC)

CW504 series LineUP

Four models are available including PAL/NTSC, Flash/Surface and power voltage.

F type: Flash mount (NTSC only)



NTSC

WV-CW504S (24 V AC or 12 V DC)

WV-CW504F (24 V AC or 12 V DC)

S type: Surface mount



PAL

WV-CW500S (220 ~ 240 V AC)

WV-CW504S (24 V AC or 12 V DC)

Super Dynamic 5

Super Dynamic 5 delivers Superior image by fusion of Super Dynamic, ABS (Adaptive Black Stretch) and i-VMD.

It can reproduce more natural dark gradation and visibility around motion area.



Iris is set for indoor: Outdoor image is washed out.



Iris is set for outdoor. Indoor image is too dark.

Super Dynamic 5

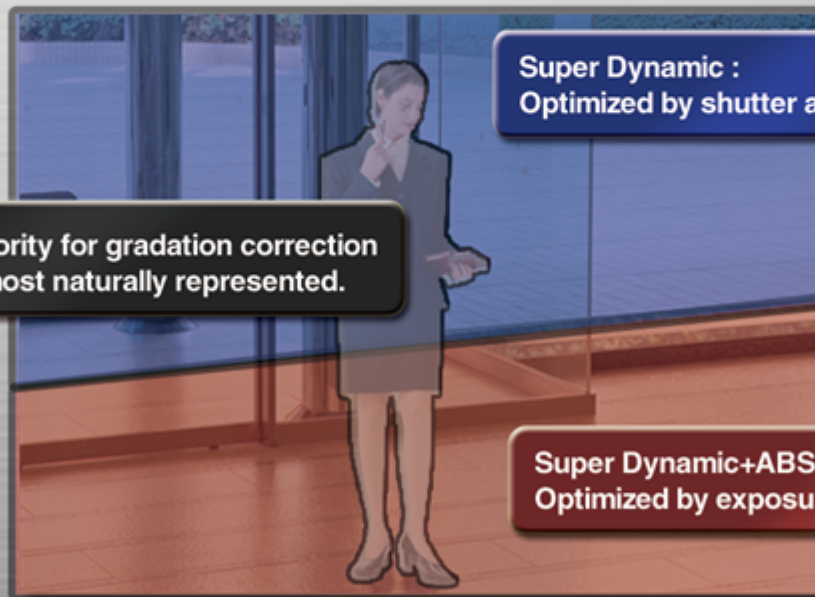


Both bright area and dark area are clearly visible.

Super Dynamic 5

Super Dynamic 5 delivers Superior image by fusion of Super Dynamic, ABS (Adaptive Black Stretch) and i-VMD.

It can reproduce more natural dark gradation and visibility around motion area.



Super Dynamic :
Optimized by shutter and signal processing

i-VMD: SD5 controls priority for gradation correction so that motion area is most naturally represented.

Super Dynamic+ABS:
Optimized by exposure level and Adaptive Black Stretch

High Resolution

**650 TV lines (Color HIGH mode), 700 TV lines (B/W mode)
high resolution image allows precise identification.**

Conventional



Unclear details and poor color reproduction.

SD5 Camera



Clear details and superior color reproduction.

High Sensitivity

High sensitivity 0.1 lux allows color images even when the lighting is dim.

When the situation is too dark, Electronic Sensitivity Enhancement and Day/Night feature further enhances the low light capability, ideal for 24-hour surveillance.

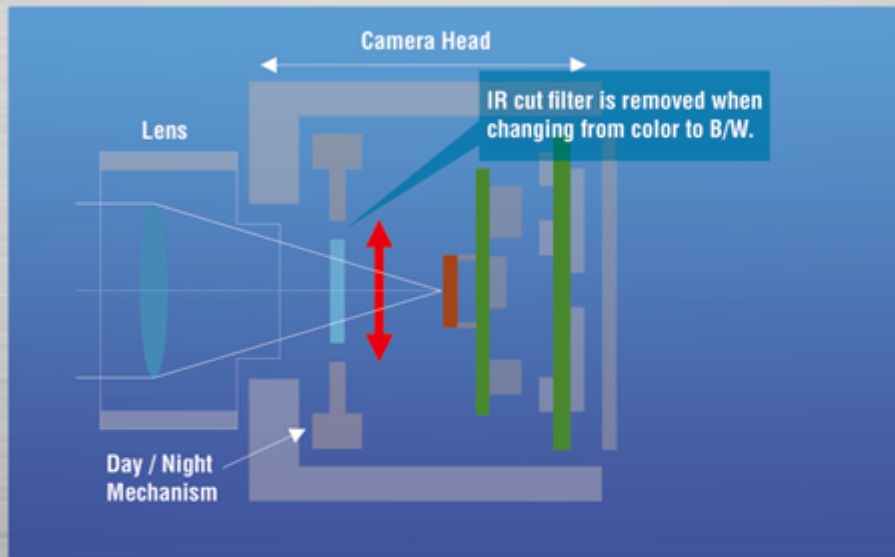


Note: 0.01 lux for B/W. With standard clear dome cover for WV-CW504 series.

Day-Night

Day/Night feature automatically switches the camera from color to B/W and vice versa depending on the illumination, an ideal solution for 24-hour surveillance.

With moving IR cut filter and ABF, both high sensitivity and accurate focus are ensured.

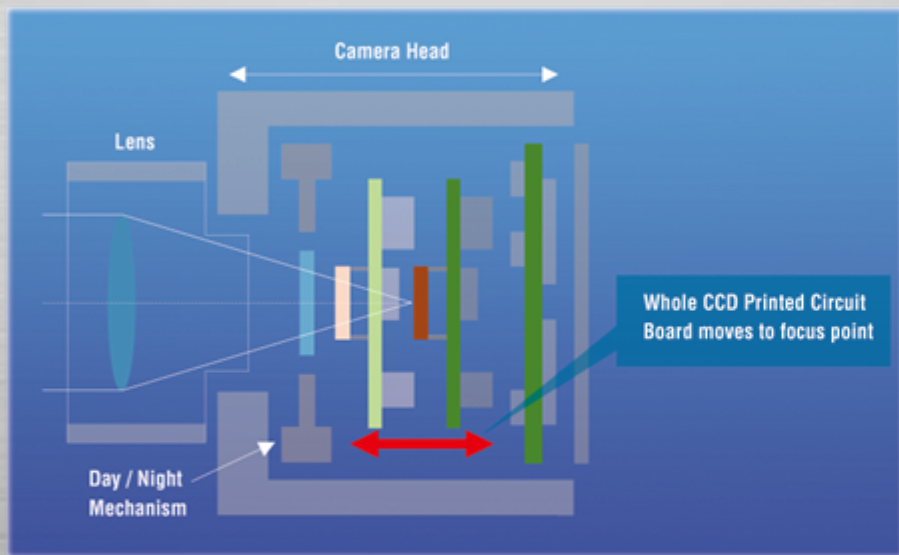


Changing from
color to B/W



ABF (Auto Back Focus)

ABF automatically adjusts back focus by adjusting the CCD position, allowing easy installation and accurate focus in both color and B/W mode.



Defocus by
IR filter removal



Accurate focus
by ABF

Adaptive DNR

2D-DNR for motion area and 3D-DNR for static area are effectively combined, realizing a clear low noise image with less motion blur and resolution deterioration.



AGC OFF: Image is too dark

AGC ON: Image is too noisy.

Conventional DNR:
Motion blur on moving subject.

Motion adaptive DNR:
Clear image without motion blur.

Auto Image Stabilizer

Auto image stabilizer digitally cancels the vibration on images by the advanced digital signal processing.

It enables the camera to be installed where vibration or wind is a concern.

Stabilizer: OFF



Stabilizer: ON



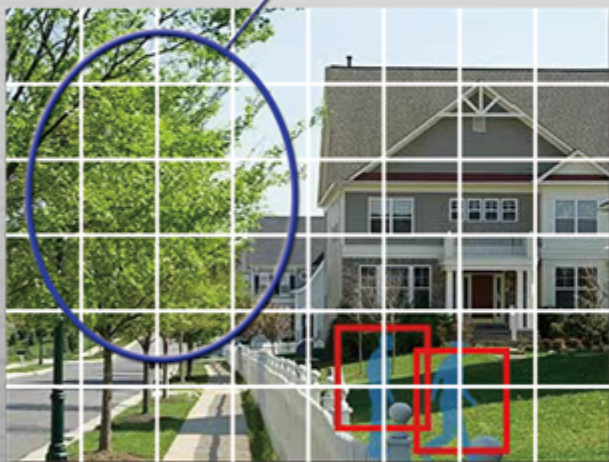
i-VMD: Intelligent VMD

High resolution detection area and advanced motion analyze algorithm enables accurate motion detection.

Up to two intruder detection areas and two object abandonment/removal detection areas can be programmed.

Conventional

Back ground movements such as tree, rain, shadow, wave are wrongly detected.



8 x 6 detection setup areas

i-VMD

i-VMD learns back ground movements and only subjective movement can be detected.



320x240 detection resolution

i-VMD: Intruder detection

Up to 4 objects detected in up to 2 detection areas can be traced simultaneously.
Depth correction allows more accurate detection when the scene includes deeper depth.



A person is approaching the fence.



Intruders are climbing the fence.



Intruders are detected and indicated by red frames.

Depth correction setup is available when used with WJ-HD600/700 (Under study).

i-VMD: Object Abandonment

Abandoned object can be detected and indicated with the red frame to alert a malicious attempt.



A person is leaving a bag.



The abandoned bag is detected and indicated by red frame.

i-VMD: Object Removal

Removed object in the specified area can be detected and indicated with the red frame to alert a theft.



A person is approaching to the clothes.

The stolen cloth is detected and indicated by red frame.

Scene Change Detection

Scene change detection can detect interference to the camera and sends an alarm.

It can detect manual change in the camera angle, removal of the camera lens, defocus, blockage of the camera lens with cloth or paint.



Lens defocused



Splay painted

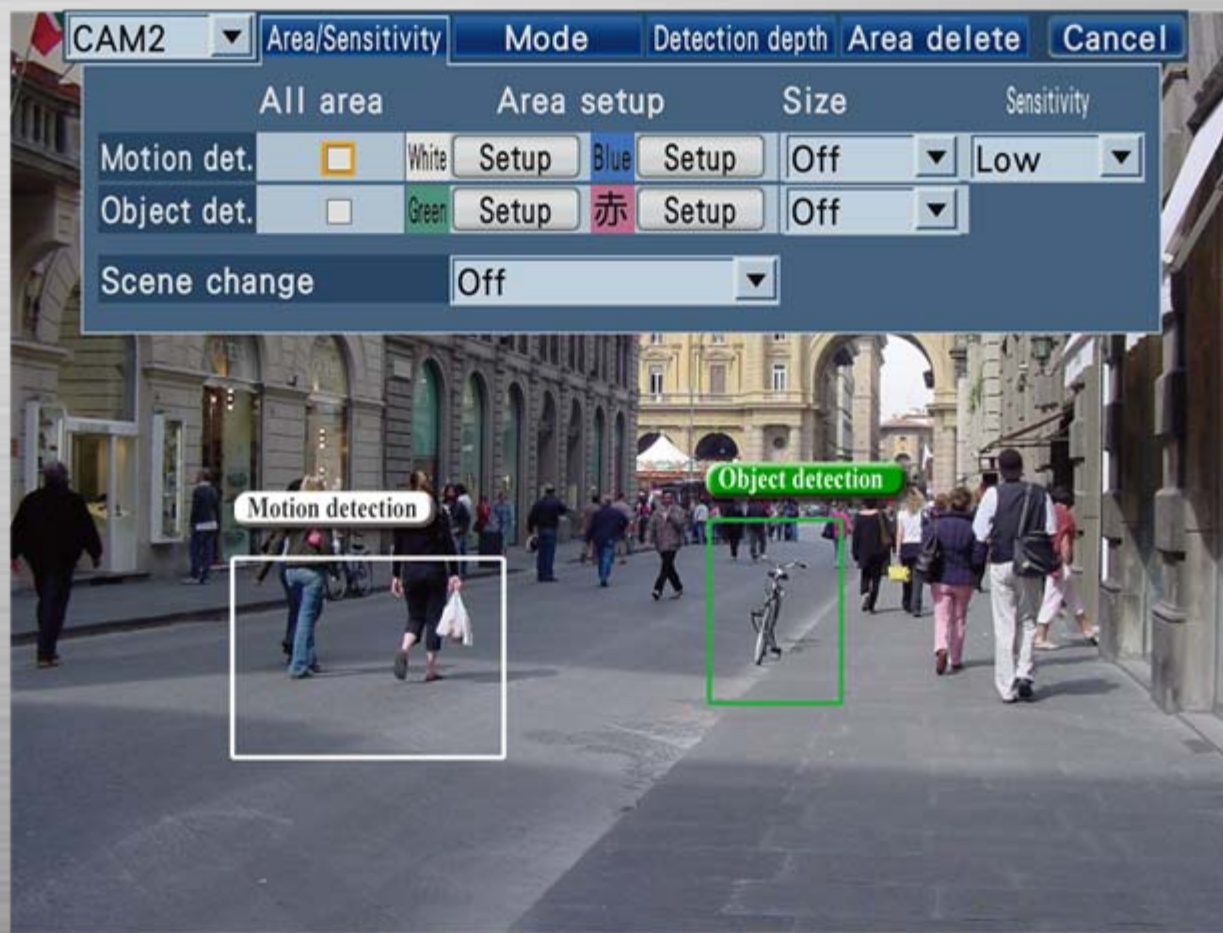


Lens covered by cloth

i-VMD Setup

With WJ-HD616/716, i-VMD setup can easily be made by using mouse and GUI.

Up to two motion detection areas and two object detection areas can easily be set by using a mouse.



Note: This operation can be made with monitor2 output of the recorder, not with the browser GUI.

i-VMD Setup

With WJ-HD616/716, i-VMD setup can easily be made by using mouse and GUI.

Depth correction can be set by dragging two rectangular areas corresponding to the proportion of each position.



Note: This operation can be made with monitor2 output of the recorder, not with the browser GUI.

Camera Data Backup

SD5 Link
Super Dynamic

Setup data of cameras can be downloaded to the recorder and the saved data can be uploaded to the cameras, saving time when applying the same setup to multiple cameras.



Setup data download

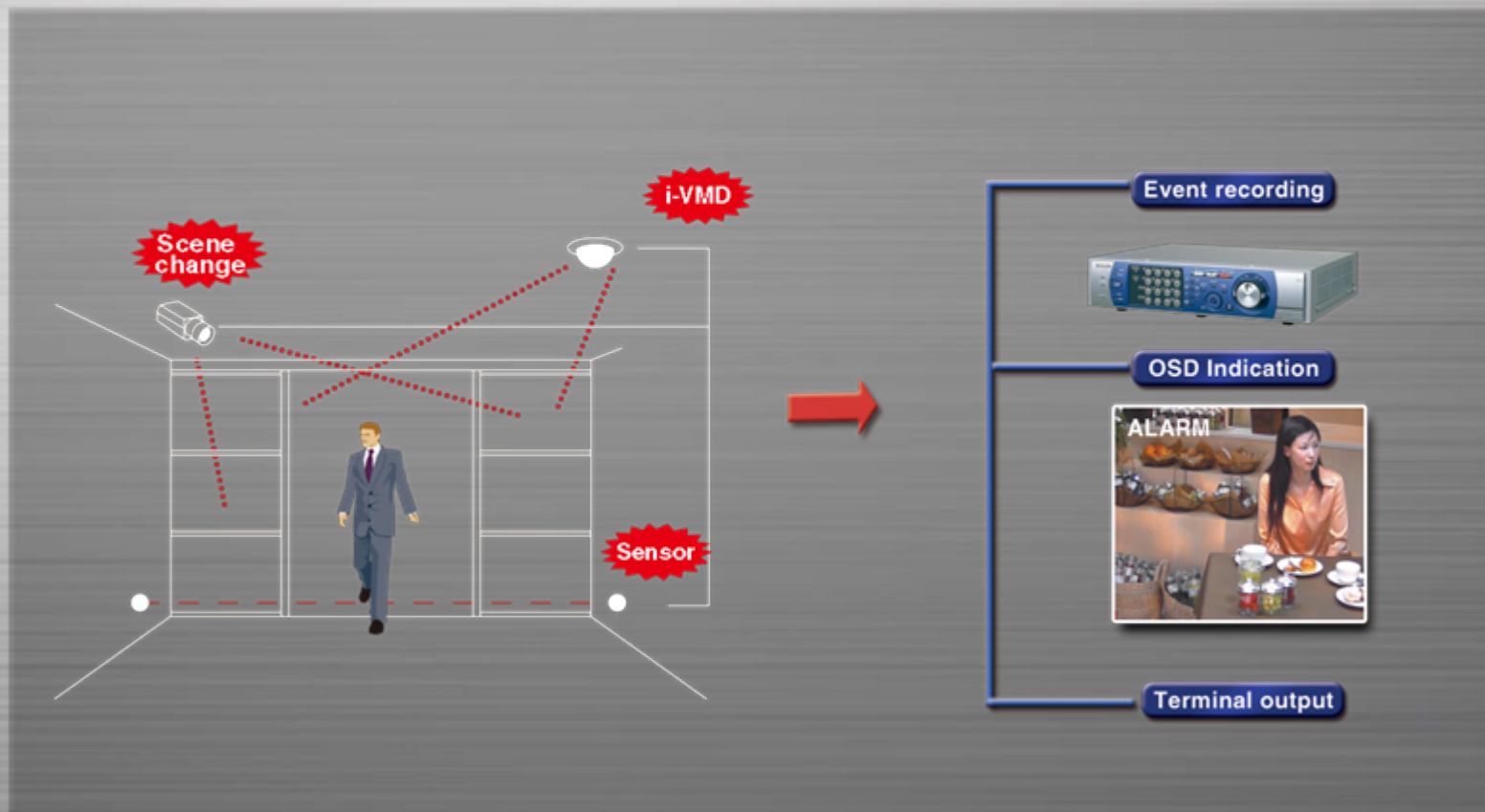


Setup data upload

Note: Only with SD5 cameras and WJ-HD616/716. The setup data can only be used for the same model.

Alarm functions

Alarm sources including i-VMD and Scene Change Detection can trigger versatile actions including OSD indication, terminal output and alarm command over the coax.



Note: WV-CP500 series are also equipped with an alarm input terminal.

Privacy Zone

Privacy zone masking provides the ability to mask sensitive areas of the image from view.

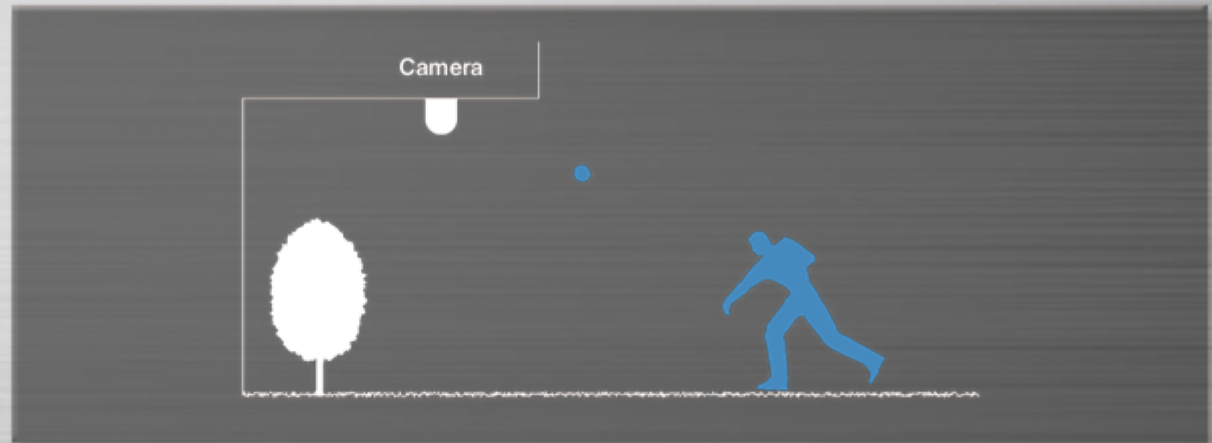
Gray mask and monotone mosaic are available and mask position/size changes corresponding to the PTZ operation.



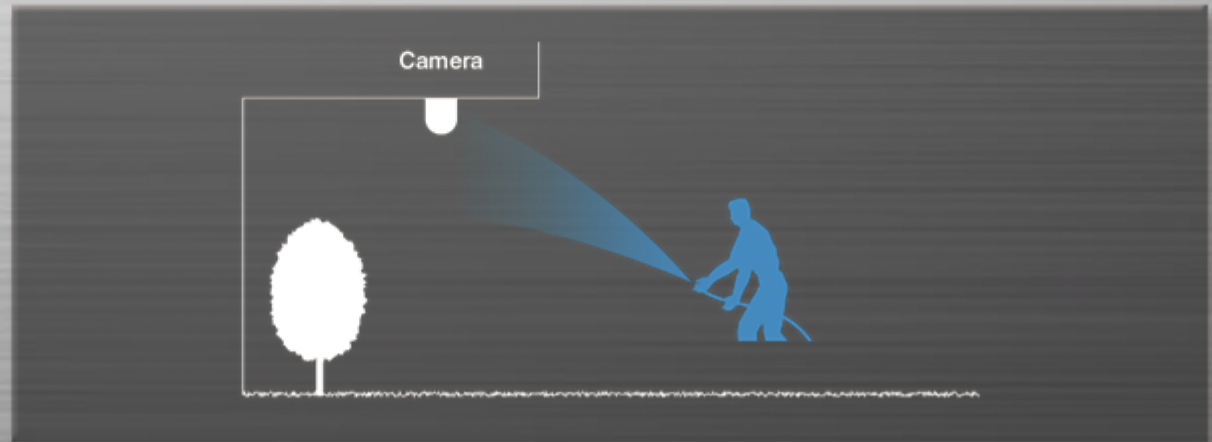
Vandal & Weather resistant

Vandal and Weather resistant feature made possible by use of the special materials allows installation in harsh environment.

Vandal resistant



IP 66 Water and Dust resistant

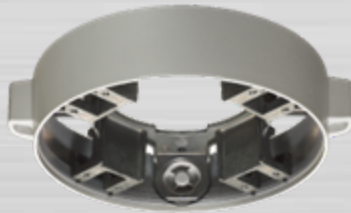


Note: Applicable for WV-CW504 series only.

Optional Parts CW504

Various optional parts are available to meet with the application environment.

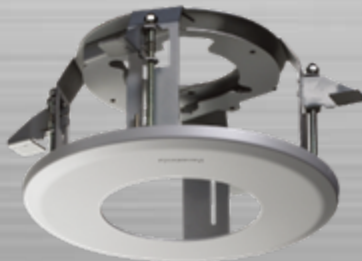
Mount Bracket for WV-CW504F
WV-Q115



Heater Unit
WV-CW5H



Embedded Ceiling Mount Bracket
WV-Q169



Smoke Dome Cover
WV-CW4S



SD5 Family

SD5 family line up including SD5 cameras, WJ-HD616/716 and LCD monitors ensure the quality and usability of total surveillance system.

Capturing



WV-CP500 series



WV-CW504 series

Superior Image
Intelligence
Reinforced Surveillance

SD5
Super Dynamic
Family

Recording

WJ-HD616/716



High quality/frame rate
Reliability
SD5 Link

Viewing

New LCD Monitor

WV-LW1900/2200



High picture quality
High definition