



● Product Summary

A touch panel compatible with a 65-inch plasma display. This panel achieves both thinness to match the display design and high-accuracy coordinate detection. With a built-in USB interface, the touch panel can be easily connected to peripheral devices of equipment such as personal computers.

● Product Specifications (Design and specifications are subject to change without notice.)

■ SPEC

Detection system	Infrared retroreflective detection
Panel aperture(W x H)	57.8" x 33.1" (1468.1 mm x 839.1 mm)
Detection range(W x H)	56.5" x 31.7" (1435 mm x 805 mm)
Effective detection range	Above detection range +1.0 mm top, bottom, right, left
Detection pitch	0.1" x 0.1" (2.5 mm x 2.5 mm)
Electronic pen(option)	Infrared system

■ INTERFACE SPEC

Interface	USB 1.1 Compliance
Compliant signal	+DATA, -DATA, VCC, GND
I/F Connector	TYPE A (Cable connector)

■ STRUCTURE

Panel shape	Flat panel
Dimensions (W x H x D) (Protruding parts and mounting bracket not included)	61.5" x 36.8" x 0.5" (1562.2 mm x 933.2 mm x 12 mm)
Carton Dimensions (W x H x D)	67.6" x 43.9" x 3.8" (1716 mm x 1114 mm x 95 mm)
Weight (Mounting bracket not included)	approx. 6.6 lbs. (3.0 kg)
Gross weight	approx. 27.1 lbs. (12.3 kg)
Escutcheon material/color	Aluminum (Filter is Polycarbonate)/Black

■ ENVIRONMENT

Temperature (Temperature gradient under 25°C/Hr)*	Operation 32 °F to 104 °F (0 °C to 40 °C)
Humidity (No condensation)*	Operation 20 % to 80 %

* Touch panel only. When the panel is attached to a plasma display, please follow the use condition of the plasma display.

■ ELECTRICAL

Power supply (voltage)	DC + 5 V ± 10 % (Supplied from USB bus power)
Electric current	DC + 5 V max 500 mA

■ SUPPORTED OS

Windows XP-32bit (Single touch), Windows XP-64bit (Single touch), Windows Vista-32bit (Single touch), Windows Vista-64bit (Single touch), Windows7-32bit (Dual touch), Windows7-64bit (Dual touch)

■ INCLUDED ACCESSORIES

-Quick Start Guide -USB Cable (2.2yd/2m) -Mounting bracket and screws -Touch pen (2)
-CD-ROM(Operating instructions, Calibration Management Software for Windows XP/VISTA)

● UPC Code

037988 159918

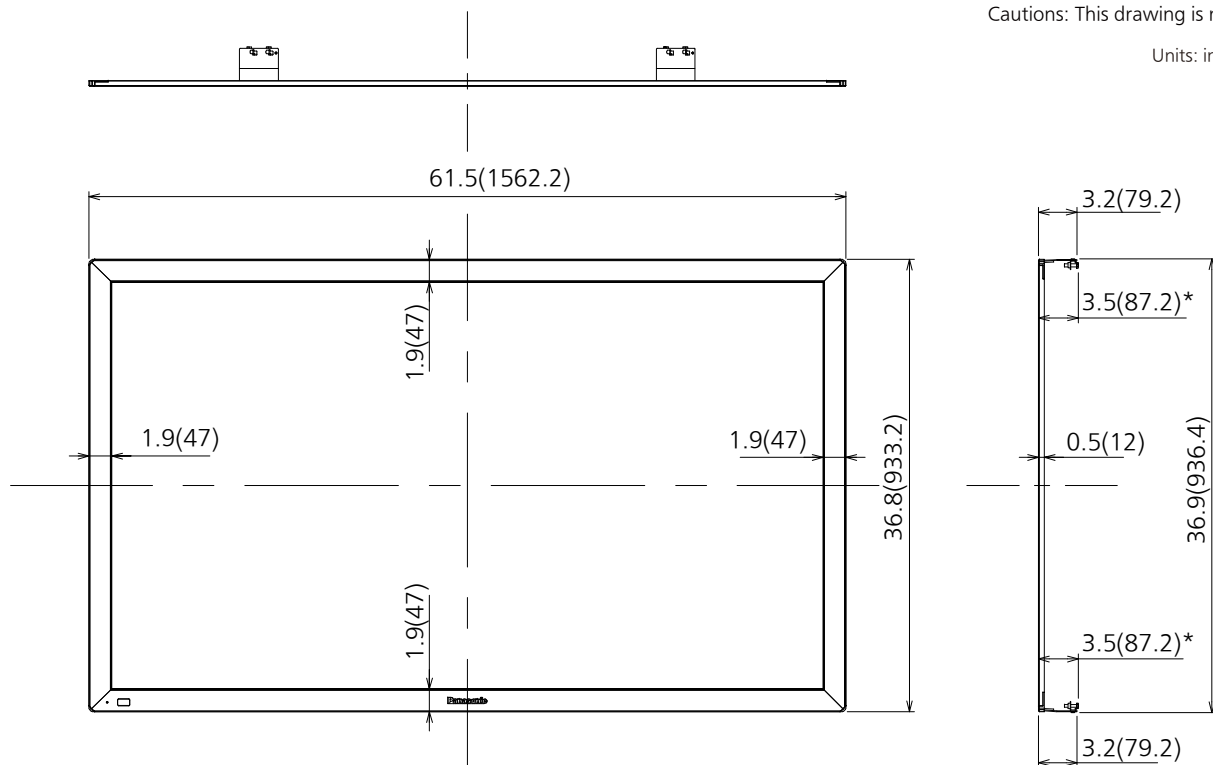
● OPTIONAL ACCESSORIES

Electronic pen	TY-TPEN30
----------------	-----------

● Dimensions

Cautions: This drawing is not a scale

Units: inches (mm)



*Dimensions may vary by the mounting set and the tightening state.

<With Display and Pedestal>

