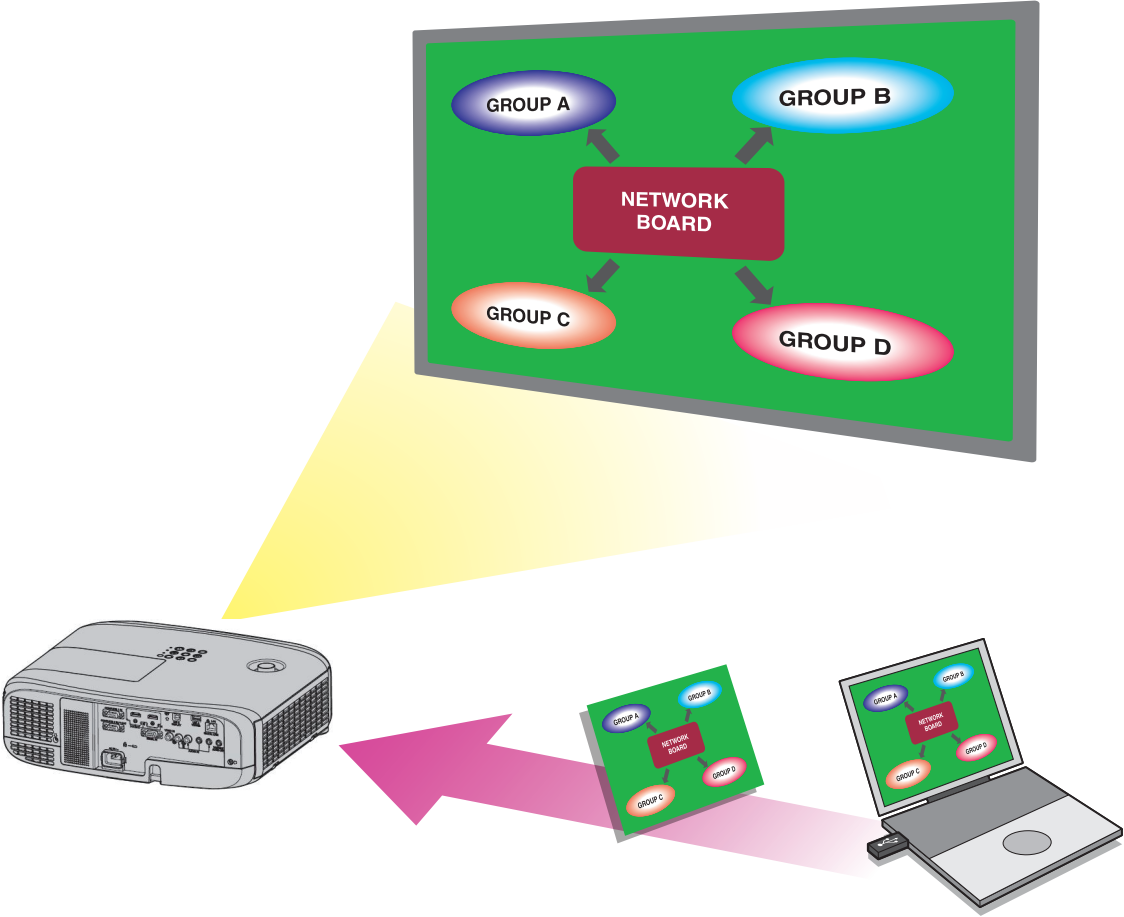


Operating Instructions

Plug and Share

Windows



Thank you for purchasing this Panasonic product.
Before using this software, please read the instructions carefully.

Contents

Introduction

Software Licensing Agreement.....	3
Notifications and requests regarding use.....	4
Plug and Share overview.....	5

Preparations

Checking your computer	7
Necessary environment for computers to be connected.....	7
System requirements	8
USB memory device used for pairing	8
Pairing the USB memory device	9
If the projector is out of reach	10

Using the Software

Starting and quitting the software	11
Starting the software	11
Quitting the software	11
Operating the launcher	12
Launcher	12
Setting the sender's names	13
Version information	13
Deleting connection point information files	13
Live mode	14
Moderator mode.....	15
Simple connection	16
<Simple connection> screen.....	16
<Check Network ID> screen	16
Checking the projector	17
Checking the network ID.....	17
Checking the network status.....	17

Appendices

Glossary	18
Frequently Asked Questions	19
Trademarks	Back cover

Software Licensing Agreement

Use of this Software is governed by the terms defined in this “Software Licensing Agreement”.
By using the software, users are deemed to have agreed to the terms of the “Software Licensing Agreement”.

● Article 1 License

The users obtain the license of the software, but the copyright or intellectual property right of the software does not transfer to the users.

● Article 2 Use by a Third Party

Licensee may not transfer or allow any third party, to use or copy the Software, whether free of charge or not.

● Article 3 Restrictions on Copying the Software

Licensee may make a single copy of the Software in whole or in part solely for backup purposes.

● Article 4 Computer

Licensee may install and use the Software on more than one computer owned or managed by Licensee.

● Article 5 Reverse Engineering, Decompiling or Disassembly

Licensee may not reverse engineer, decompile or disassemble the Software.

Panasonic Connect Co., Ltd. shall not be bound by warranty for any defects in the Software caused by Licensee’s reverse engineering, decompiling or disassembly of the Software.

Furthermore, Panasonic Connect Co., Ltd. or its distributors or dealers will not be responsible for any damage to the Licensee caused by Licensee’s reverse engineering, decompiling or disassembly of the Software.

● Article 6 After-sales Service

Panasonic Connect Co., Ltd. shall undertake to notify Licensee of whether the problem is a known error in the program (“bug”), or whether the way in which the Software is to be used should be modified.

Furthermore, the Software is subject to revision without prior notice.

● Article 7 Indemnification

Panasonic Connect Co., Ltd. liability with respect to this Software is limited to the conditions defined in Article 6 herein.

Panasonic Connect Co., Ltd. or any of its distributors or dealers shall not be liable for any damage suffered by Licensee, either directly or through claims from a third party, arising from or in connection with Licensee’s use of the Software.

Furthermore, Panasonic Connect Co., Ltd. does not guarantee the successful operation of the software unless it is used with Panasonic projectors.

● Article 8 Export Control

Licensee agrees not to export or re-export the Software to any country other than the country of purchase of the projector in any form without the appropriate export licenses under the regulations of the country where Licensee resides or of any other country as may be required by such export or re-export.

Please note the following.

- Panasonic Connect Co., Ltd. hereby disclaims all liability for any damages or losses, whether suffered directly or indirectly, which have been caused by the use of or by trouble occurring in the projectors.
- Panasonic Connect Co., Ltd. cannot be held liable for damages arising from data corruption or loss as a result of using the projectors.
- The illustrations and screen displays given in this manual may differ from what is actually displayed.
- In general, screenshots from Windows 10 are used to describe operations in this manual.
- The specifications of this software are subject to change without notice.

Notifications and requests regarding use

● Request Regarding Security

When using this software, security breaches of the type described below are conceivable.

- Leakage of your private information via the software
- Illegal operation of the software by a malicious third-party
- Harm to or cessation of operation of the software by a malicious third-party

Take steps to ensure that the projectors and computer used are secured and protected.

- Make sure the password is as hard to guess as possible.
- Change the password periodically.
- Panasonic Connect Co., Ltd. and its affiliated companies never directly ask customers for their password. Do not give out your password even if directly asked by a third-party representing themselves as Panasonic Connect Co., Ltd.
- Use the product in a network that is kept secure by firewall and other settings.
- Establish a password for the computer that will be used in order to restrict the users who can log on.

Security-related precautions to be followed when using wireless LAN products

The advantage of a wireless LAN is that information can be exchanged between a computer or other such equipment and an access point using radio waves as long as you are within range for radio transmissions.

On the other hand, because the radio waves can travel through obstacles (such as walls) and are available everywhere within a given range, problems of the type listed below may occur if security-related settings are not made.

- A malicious third-party may intentionally intercept and monitor transmitted data including the content of e-mail and personal information such as your ID, password, and/or credit card numbers.
- A malicious third-party may access your personal or corporate network without authorization and engage in the following types of behavior.
 - Retrieve personal and/or secret information (information leak)
 - Spread false information by impersonating a particular person (spoofing)
 - Overwrite intercepted communications and issue false data (tampering)
 - Spread harmful software such as a computer virus and crash your data and/or system (system crash)

Since most wireless LAN adapters or access points are equipped with security features to take care of these problems, you can reduce the possibility of these problems occurring when using this product by making the appropriate security settings for the wireless LAN device.

Some wireless LAN devices may not be set for security immediately after purchase. To decrease the possibility of occurrence of security problems, before using any wireless LAN devices, be absolutely sure to make all security-related settings according to the instructions given in the operation manuals supplied with them.

Depending on the specifications of the wireless LAN, a malicious third-party may be able to break security settings by special means.

Panasonic Connect Co., Ltd. asks customers to thoroughly understand the risk of using this software without making security settings, and recommends that the customer make security settings at their own discretion and responsibility.

Plug and Share uses the following software programs.

A portion of this software is based in part on the work of the Independent JPEG Group.

Plug and Share overview

Plug and Share is a software application that allows you to use a USB memory device to project computer screen images via a projector on a wireless LAN network, for example, without having to select the projector as with previous applications.

Memo

- The software can also be used in situations where connecting a USB memory device to the projector would be difficult, such as when the projector is mounted to a ceiling.
 - ☞ “If the projector is out of reach” (page 10)
- When the projector’s wireless LAN connection method is set to [SIMPLE], up to 4 terminals can be connected via wireless LAN in live mode, and up to 10 terminals can be connected in moderator mode.
- The software does not support audio transmission. However, if “Wireless Manager ME” is installed and [Produce audio along with video during projection] is enabled in the option settings, the computer’s audio will be output from the projector while the software is in use.
- The display resolution of projected images differs depending on the aspect ratio of the display device of the projector to be used.
 - When 4:3: Images of 1024 x 768 dots are displayed with the number of display dots of the projector.
 - When other than 4:3: Images of 1280 x 800 dots are displayed with the number of display dots of the projector.

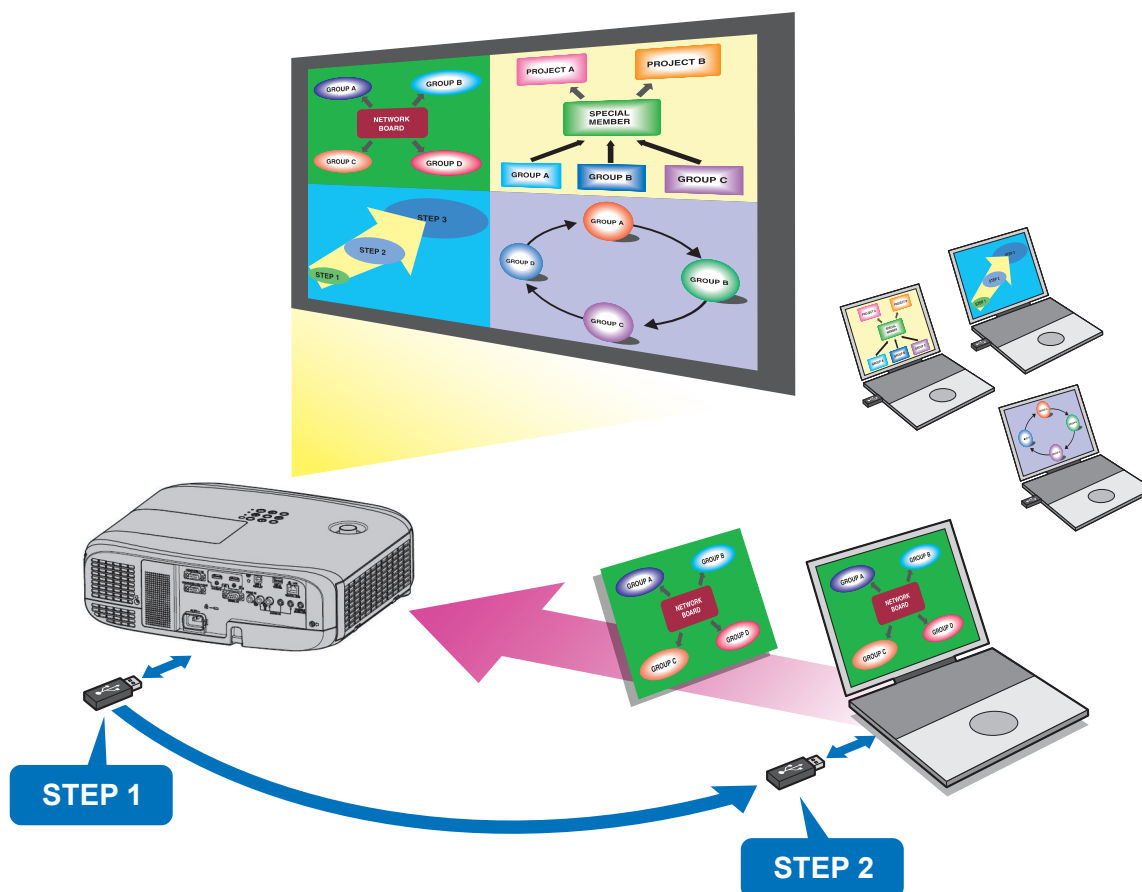
You can project the computer screen with the following two steps.

STEP 1: Insert a USB memory device in the projector, and pair it with the projector.

☞ “Pairing the USB memory device” (page 9)

STEP 2: Insert the paired USB memory device in the computer, and start the software.

☞ “Starting the software” (page 11)



- The software includes the following features.
 - By connecting and pairing the USB memory device with a projector, the software eliminates the projector selection that was necessary with previous applications.
 - Simply connecting the paired USB device to the computer and starting the software readies projection.
 - Copying the paired USB device’s files to other USB devices allows you to connect to the projector from multiple computers at the same time.

Plug and Share Overview (cont.)

- The following two modes are available for the software.
 - Live mode
 - Allows up to four computer screens to be displayed on the projection screen at the same time from a single projector. The computer screens displayed on the projection screen can be switched via launcher operations.
 - ☞ “Live mode” (page 14)
 - Moderator mode
 - Allows a single computer screen from among up to 16 simultaneously displayed screens to be displayed in full screen via remote control or projector button operations.
 - ☞ “Moderator mode” (page 15)

Checking your computer

■ Necessary environment for computers to be connected

- First, check your computer to see whether it has a built-in wireless LAN function.
- Before connecting the projector to the computer, be sure to check the following settings.

▶ Check 1 Wireless LAN settings

- Is your wireless LAN adapter properly recognized?
- Is the wireless LAN adapter switched on?
- Install the wireless LAN adapter driver beforehand.
For details on how to install the driver, refer to the instructions accompanying the wireless LAN adapter.

▶ Check 2 Settings for the logged on user

- Can you log on with the administrator's privileges?

▶ Check 3 Computer settings

- When security (firewall) software and utilities for wireless LAN adapter are installed, these may prevent connection of the projector.
- Has the firewall for blocking unsolicited programs been turned off or shut down?
☞ "Frequently Asked Questions" (Page 19)

Operation is not guaranteed for all wireless LAN adapters and built-in wireless LAN adapters.

Check your computer (cont.)

■ System requirements

To use this software, the computer must satisfy the following requirements.

OS:	Microsoft Windows 8.1 Windows 8.1 32/64 bit, Windows 8.1 Pro 32/64 bit Microsoft Windows 10 Windows 10 Home 32/64 bit, Windows 10 Pro 32/64 bit The Japanese, English and Chinese versions of the above operating systems are supported.
CPU:	Intel® Core™ i5 or higher recommended
Memory:	1024 MB or more
LAN environment:	Wireless LAN adapter (IEEE802.11 b/g/n/a) is necessary
Monitor screen:	High Color (16 bits) or up
Desktop area:	1024 dots × 768 dots or more 2048 dots × 1536 dots or less

Memo

- Note that operation is not guaranteed when used with system environments other than the above or on homemade computers.
- When using a computer operating in a wireless WAN, some functions may not be available.
- When connecting under the IEEE802.11n standard, the wireless LAN adapter, projector, and access point used must all support the 11n standard.
- When using the projector's wireless LAN connection function, use 2.4 GHz / 5 GHz band waves. For precautions on using wireless LAN connections and information on usable wireless LAN channels, refer to the operating instructions for the projector.
- Be sure to stop image display before switching the graphics function on a computer equipped with a switchable graphics function.
- The display resolution of projected images differs depending on the aspect ratio of the display device of the projector to be used.
 - When 4:3: Images of 1024 x 768 dots are displayed with the number of display dots of the projector.
 - When other than 4:3: Images of 1280 x 800 dots are displayed with the number of display dots of the projector.

Operation is not guaranteed for all computers that meet the above conditions.

■ USB memory device used for pairing

- Use a commercially available USB memory device formatted in the FAT16 or FAT32 file system.
Approximately 30 MB of space is required.
- USB memory devices equipped with security functions are not supported.
- For details on supported USB memory devices for pairing, refer to the "Using the USB memory" section in the operating instructions for the projector.
- For details on handling the USB memory device for pairing, refer to the "USB memory that can be used with the projector" section in the operating instructions for the projector.

Pairing the USB memory device

Insert a USB memory device in the projector, and pair it with the projector. Doing so saves the software and an information file on the connection point (i.e., projector) to the USB memory device, which allows you to connect to the paired projector later by simply inserting the USB memory device into the computer and starting the software.


1 Configure the projector's settings.

- Set [NETWORK/USB] → [Panasonic APPLICATION] → [PAIRING GUIDE] to [ON] in the projector's menu.

2 Press the <Panasonic APP> button on the remote control.

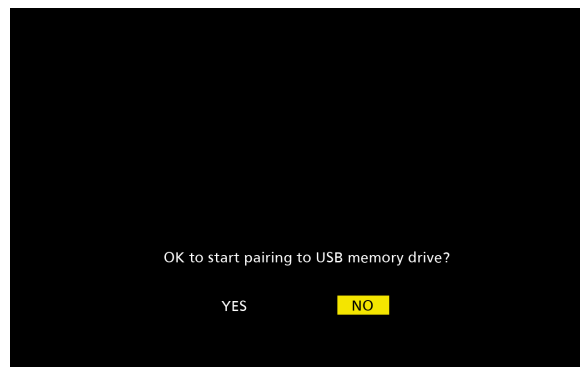
- The input switches to Panasonic APPLICATION, and the standby screen appears.

3 Insert the USB memory device to be paired into the <USB A (VIEWER)> connector.

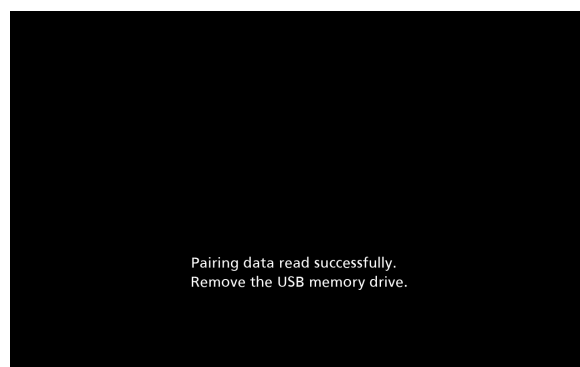
- For details on supported USB memory devices for pairing, see  "USB memory device used for pairing" (page 8).
- For details on handling the USB memory device for pairing, refer to the "USB memory that can be used with the projector" section in the operating instructions for the projector.

4 When the confirmation message appears on the standby screen, use the ►◀ buttons to select [Yes], and press the <ENTER> button.

- Pairing data (i.e., the software and a connection point information file) is saved to the USB memory device.



5 Remove the USB memory device when the completion message appears on the standby screen.



Memo

- Use a commercially available USB memory device formatted in the FAT16 or FAT32 file system. Approximately 30 MB of space is required.
- USB memory devices equipped with security functions are not supported.


If the projector is out of reach

In situations where connecting a USB memory device to the projector would be difficult, such as when the projector is mounted to a ceiling, you can download the software onto the USB memory device from a website, and use the <Simple connection> screen to register the projector for use.



1 Download the software from the website, and save it to the USB memory device.

- Follow the instructions for downloading Plug and Share on the downloads page of the website (<https://panasonic.net/cns/projector/download/application/>).
- Extract the downloaded zip file, and move the created folder to the root directory of the USB memory device (i.e., the first location displayed when the USB memory device is opened).


2 Start the software from the USB memory device.

- Double-click “PlugAndShare.exe” () in the folder that was moved to the USB memory device.

3 Select the projector to which to connect in the <Simple connection> screen.

- When you select a network ID in the screen, a connection point information file is created. After this, the USB memory device can be subsequently used as if it was paired with the projector via direct connection.
- For details on the <Simple connection> screen, see  “Simple connection” (page 16).
- For details on checking network IDs, see  “Checking the projector” (page 17).

4 The launcher starts.

- The launcher allows you to perform full screen display controls and controls for switching which computer screen is projected.
- For details on the launcher, see  “Operating the launcher” (page 12).

Memo

- Use a commercially available USB memory device formatted in the FAT16 or FAT32 file system. Approximately 30 MB of space is required.
- USB memory devices equipped with security functions are not supported.
- When using the projector’s wireless LAN connection function, use 2.4 GHz / 5 GHz band waves. For precautions on using wireless LAN connections and information on usable wireless LAN channels, refer to the operating instructions for the projector.

Starting and quitting the software

Before starting the software, be sure to configure the network settings on the projector.

Setting [NETWORK/USB] → [WIRELESS LAN] to [SIMPLE] in the projector's menu allows you to establish wireless LAN connections easily.

The software can also be used with the 5 GHz frequency of IEEE802.11a/n or when [WIRELESS LAN] is set to [M-DIRECT].

For details on the [M-DIRECT] settings, refer to the [NETWORK/USB] menu → [WIRELESS LAN] setting in the operating instructions for the projector.

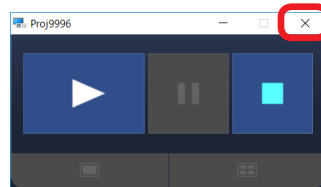
■ Starting the software

1 Double-click in the paired USB memory device.

- Connection with the projector will be established when the software starts, and the launcher will appear.
- If a password is configured for the projector, the password will be required whenever the launcher starts or projectors are switched.
- When starting the software for the first time after downloading it from the website or after deleting a connection point information file with the intention of connecting to a different projector, the <Simple connection> screen will appear. In such cases, click the appropriate network ID to select the projector.
↳ "Simple connection" (page 16)

■ Quitting the software

1 Click in the launcher.



If the software was started for the first time after downloading it from the website or if connection with a different connection point was established via the <Simple connection> screen, a confirmation message on whether to save the connection point information file will appear upon quitting the software.

Memo

- Proper operation will not be possible if the folders and files stored on the USB memory device are renamed or moved.
- Do not remove the USB memory device while the software is running. An abnormal software shutdown may occur.

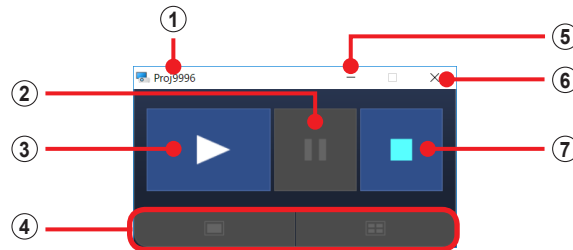
Operating the launcher

The launcher appears whenever the software is started from a connected USB memory device that was paired, a connected USB memory device for which a projector was previously selected and connected via the <Simple connection> screen, or a connected USB memory device on which a connection point information file is stored.

The launcher allows you to perform controls for the projected image (e.g., starting/stopping image display) and for displaying system menus.

When a connection is established with the projector, operation of the image display control buttons is enabled.

■ Launcher



① Indicates the sender name setting and version information.

- ☞ “Setting the sender’s names” (page 13)
- ☞ “Version information” (page 13)

② Pause the displayed image.

This can only be used during image display. When used, the displayed image freezes.

③ Start or resume image display.

④ Switch the currently displayed image to full-screen display or split-screen display.

This can only be used during image display.


This is disabled during moderator mode. Display of images from a different computer in full-screen display is performed via remote control or direct control on the projector, and not via the launcher.

⑤ Minimize the launcher display.

⑥ Quit the software.

⑦ Stop image display, or switch to split-screen display.

✎ Memo ✎

- The launcher position can be changed by dragging it with the mouse.
- When the launcher display is minimized and placed on the taskbar, it can be displayed again by clicking  on the taskbar.
- Video portions may not play back depending on the video playback application used.
- The software does not support audio transmission. However, if “Wireless Manager ME” is installed and [Produce audio along with video during projection] is enabled in the option settings, the computer’s audio will be output from the projector while the software is in use.
- If a start operation is performed via the launcher for a projector that is in standby mode, the projector will turn on and image display will start.

Attention

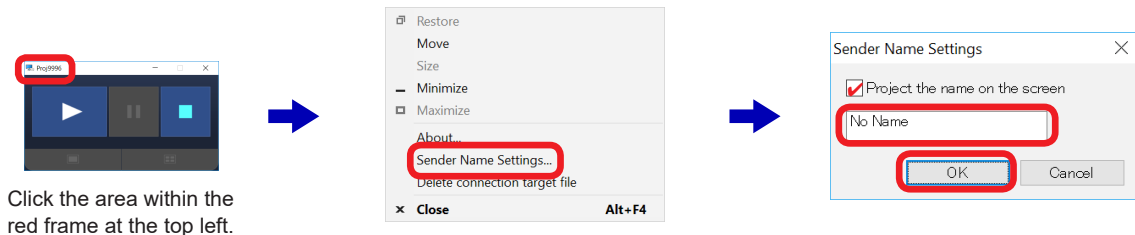
- When turning on a projector, be sure there is no one in the vicinity of the projector to avoid shining the projector’s light into a person’s eyes.

Operating the launcher (cont.)

■ Setting the sender's names

The sender's name can be displayed on the currently displayed image.

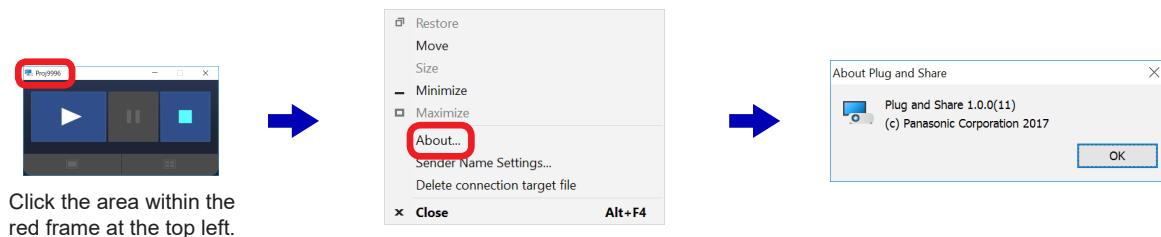
- 1 Click the top left of the launcher to open the system menu.
- 2 Click [Sender Name Settings...] in the system menu.
- 3 Select the [Sender Name Settings...] → [Project the name on the screen] checkbox.
- 4 Enter the name of the sender, and click [OK].
 - Enter up to eight alphanumeric characters.



■ Version information

The version information of the software can be displayed.

- 1 Click the top left of the launcher to open the system menu.
- 2 Click [About] in the system menu.

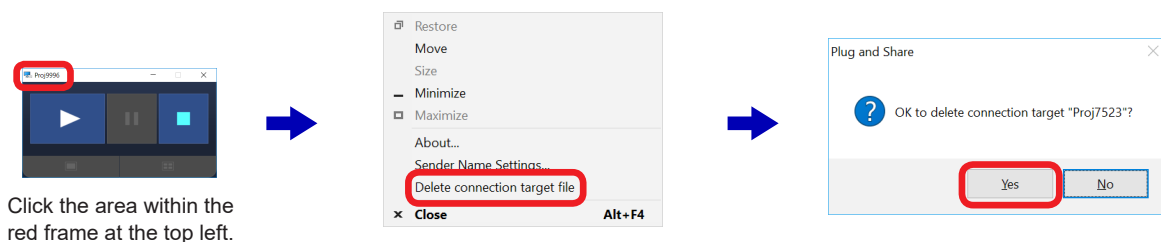


■ Deleting connection point information files

Perform this procedure when you want to connect to a different projector.

Delete connection point information files that were created via pairing or the <Simple connection> screen. The <Simple connection> screen will appear the next time you start the software, allowing you to select the projector to which to connect. ☞ “<Simple connection> screen” (page 16)

- 1 Click the top left of the launcher to open the system menu.
- 2 Click [Delete connection target file] in the system menu.
- 3 When the confirmation message appears, click [Yes].



Operating the launcher (cont.)

■ Live mode

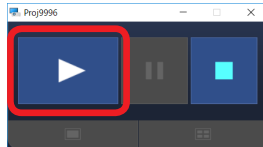
This mode allows the computer's user to display the computer's screen in full screen via the projector during use. Up to four computer screens can be displayed in split-screen display depending on the number of connected users, and each user can enable/disable full-screen display of their computer screen. This mode is ideal for meetings with few participants.

1 Configure the projector's settings.


Set [NETWORK/USB] → [Panasonic APPLICATION] → [Moderator Mode] to [OFF] in the projector's menu.

2 Click in the launcher.

The screen of the computer on which this was clicked will be displayed in full screen. If the operation was performed on multiple computers, a 4-screen split display appears, and the computer on which the enlarging operation is performed in the launcher will be displayed in full screen. (Up to four computers.)




● Switching to full-screen display

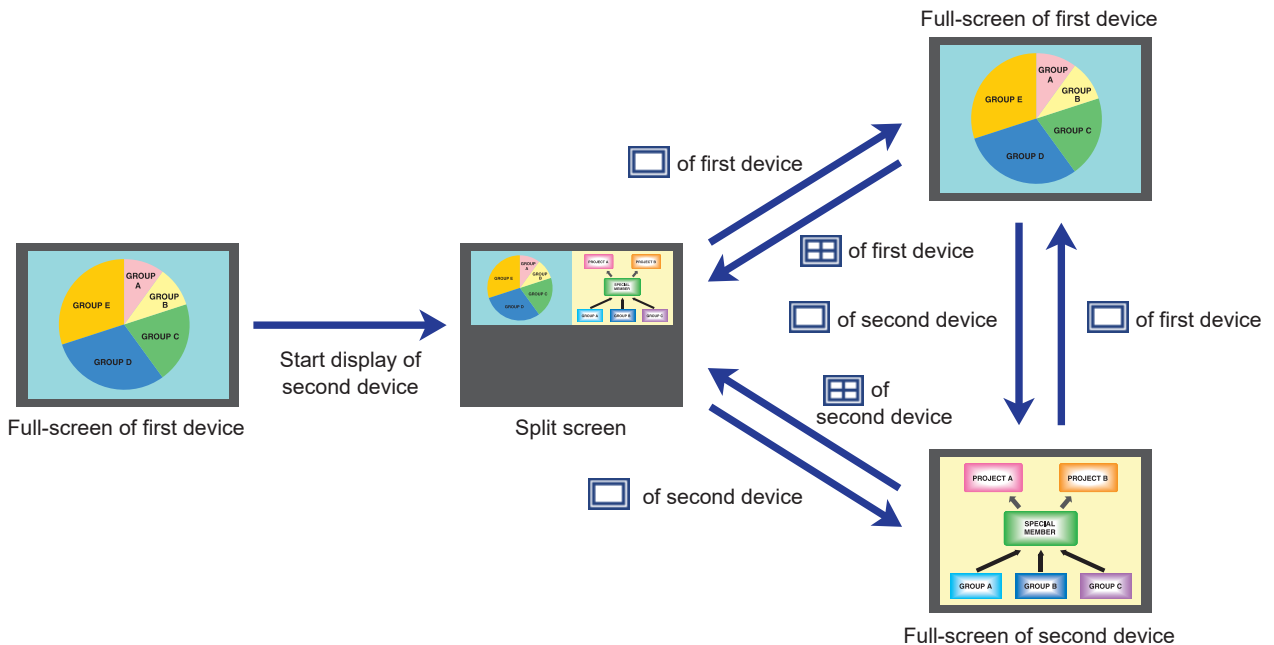
During split-screen display, click  in the launcher of one of the displayed computers to display the screen of that computer in full screen.

● Switching to split-screen display


Click  in the launcher of the computer being displayed in full screen to return to split-screen display.

● Switching from one computer's screen to another computer's screen

Click  in the launcher of one of the computers while another computer's screen is being displayed in full screen to switch the full-screen display to the that of the new computer.



Memo

- When another computer's screen is being displayed in full screen, clicking  in the launcher may not switch the full-screen display. Configure the following settings on the projector in such cases.
Set [MENU] → [NETWORK/USB] → [Panasonic APPLICATION] → [CUT IN] to [ON].

Operating the launcher (cont.)

■ Moderator mode

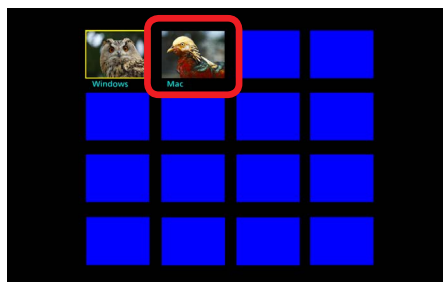
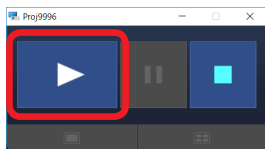
This mode allows a moderator, for example, to perform controls via remote control or direct control on the projector. Up to 16 computer screens can be displayed in split-screen display depending on the number of connected users, and full-screen display of any of the users' computer screens can be enabled/disabled.

1 Configure the projector's settings.

Set [NETWORK/USB] → [Panasonic APPLICATION] → [Moderator Mode] to [ON] in the projector's menu.

2 Click in the launcher.

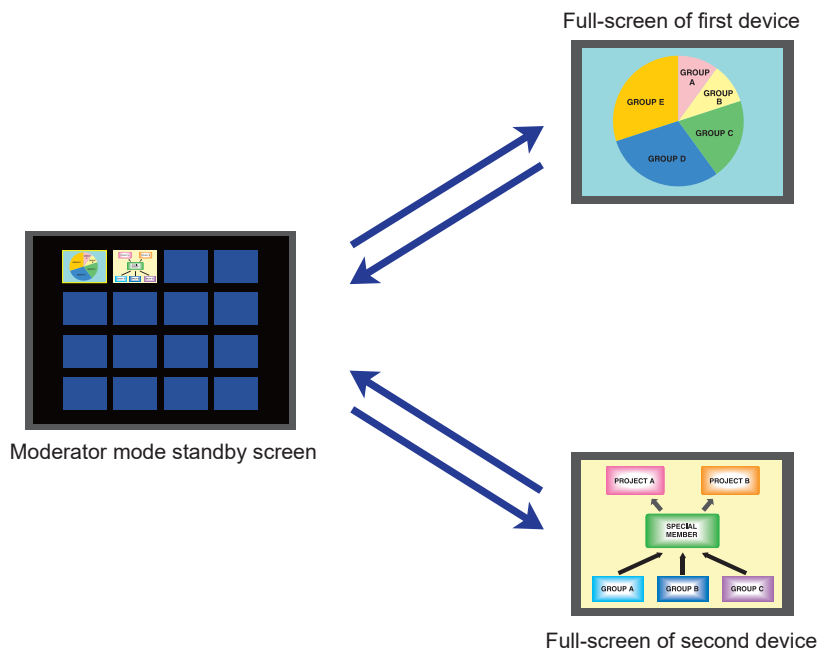
The screens of the computers in use appear in the moderator mode standby screen.



Moderator mode standby screen

3 Select the computer to be displayed in full screen.

Use the ▲▼◀▶ buttons on the remote control or the projector to select the computer to be displayed in full screen from among the images displayed in the standby screen, and press the ENTER button to switch to full-screen display. To return to the standby screen, press the ENTER button again during full-screen display.



Memo

- When the projector's wireless LAN connection method is set to [SIMPLE], up to 10 terminals can be connected via wireless LAN, and up to 10 screens can be displayed.
- The software does not support audio transmission. However, if "Wireless Manager ME" is installed and [Produce audio along with video during projection] is enabled in the option settings, the computer's audio will be output from the projector while the software is in use.

Simple connection

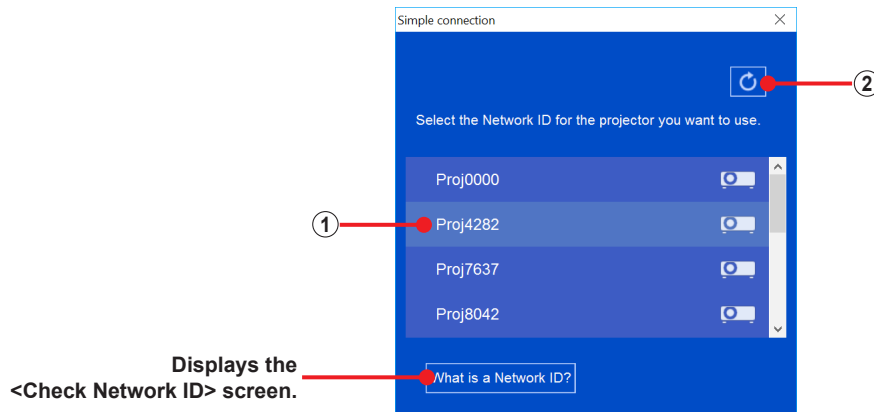
■ <Simple connection> screen

The <Simple connection> screen appears when the software is started from a USB memory device that has not been paired.

When a projector is selected from among the network IDs displayed in the screen, the projector can be used as if it had been paired.

If the connection point information file is saved upon quitting the software, the launcher will start on subsequent occasions, eliminating the need to make a selection each time.

☞ “Quitting the software” (page 11)



① Network ID

Consists of “Proj” followed by a 4-digit number used for identifying the projector

☞ “Checking the projector” (page 17)

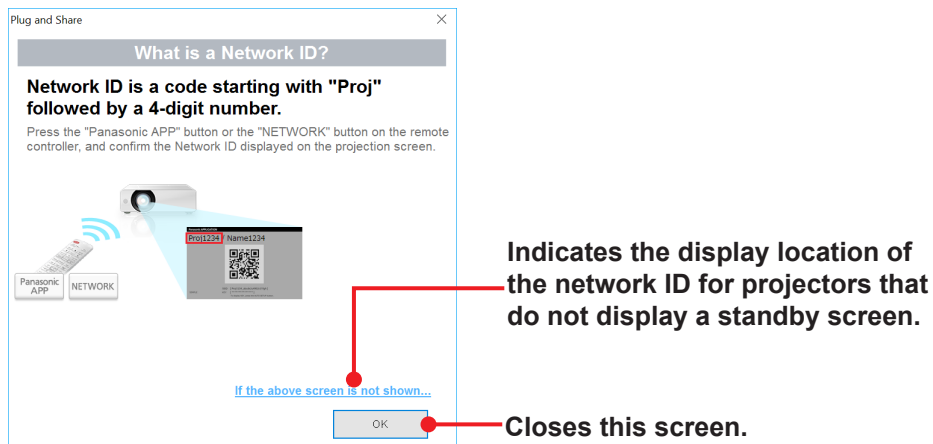
② Update button

Refresh the projector search results.

■ <Check Network ID> screen

This screen shows the network ID verification method.

To open the <Check Network ID> screen, click [What is a Network ID?] in the <Simple connection> screen.



Checking the projector

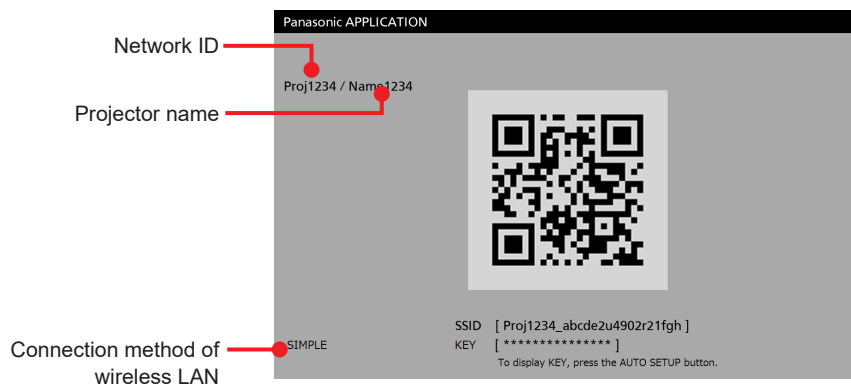
■ Checking the network ID

- 1 Turn on the projector.
- 2 Press the <Panasonic APP> button on the remote control (or the <INPUT SELECT> button on the projector), and switch the input to [Panasonic APPLICATION].
A standby screen is displayed in the image projected by the projector.
- 3 Verify the projector's wireless LAN connection method, projector name, and network ID.
The locations in which the information is displayed will vary depending on the projector.

- For projectors that display the standby screen

Even for projectors that ordinarily display the standby screen, the standby screen will not appear if another user is already displaying images or if [Moderator Mode] (Page 15) is set to [ON]. In such cases, you can check the network ID by pressing the <AUTOSSETUP/CANCEL> button.

- Example of standby screen display.




■ Checking the network status

You can check the IP address and other network settings information in the projector's menu.

- Press the <MENU> button on the projector, and in the menu that is displayed, select [NETWORK/USB] → [NETWORK STATUS] to check the detailed network setting information.

Glossary

Word	Explanation
Access point	This is a device which serves as a transmitter and receiver of radio signals when a computer and network are connected using a wireless LAN. When a computer is connected to an access point, it can communicate through the network connected to the access point.
Account User account	This refers to the registered name used to identify the individuals who use the computer (i.e., users) and includes two types of accounts; those with administrator privileges and those with general user privileges. Accounts with general user privileges cannot use some functions and applications.
Account with administrator privileges	This account enables changes affecting other users to be made. When performing an operation for which the  (shield) is displayed, a window is displayed asking the administrator to confirm that no problems will arise even if the operation is performed.
Firewall	This is a security system designed to protect computers from unauthorized access via a network (such as the internet). Unauthorized access is prevented by restricting the data exchanged between the network and computer, and allowing only authorized data to pass through to the computer.
LAN	Abbreviation for "Local Area Network". This is a network with a relatively narrow range such as inside a company.
Logoff	This action clears the status (logon) in which it is possible to access a network or computer system. It is also called 'logout'.
Logon	This action establishes the status in which a network or computer system can be accessed. It is also called 'login'.
MPEG	This refers to a group of technology standards aimed at efficiently compressing digital moving images. One such standard is MPEG2 which has an excellent image quality and is used for DVD-Video and other video formats. Another standard is MPEG1 which has a lower compression rate than MPEG2, and is used by video CDs. Yet another standard is MPEG4 for distributing images with a low image quality and high compression rate over telephone lines and other lines with a low communication speed.
Wireless LAN	This is a network which uses signals to communicate wirelessly. It obviates the need for a LAN cable connection since the data is sent and received using a common wireless frequency.

Frequently Asked Questions

■ Wireless LAN connection cannot be established between the projector and the computer.

● Has the software been started up?

The software must be started on the computer to enable wireless transmission of images to the projector.

■ Windows firewall has been detected.

Click [Yes] on the <Implementation of a measure> screen.

The measure is implemented automatically.

To configure the settings manually, perform one of the following procedures based on your operating system.

Is this software registered in [Allow an app through Windows Firewall]?

To register:

1. In Windows 8.1, press the Windows logo + X keys on the keyboard, and click [Control Panel].
In Windows 10, enter "Control Panel" in the search box on the taskbar, and start [Control Panel].
2. Click [System and Security] in the <Control Panel> screen.
3. Click [Allow an app through Windows Firewall] in the <System and Security> screen.
4. Click [Change settings] , and change to the allow registration mode.
5. Click [Allow another app] to display the <Add an app> screen, and click [Browse].
6. Specify the USB memory device on which this software is stored, select "PlugAndShare," and click [Open].
7. Check that this software is displayed in the [Apps] list of the <Add an app> screen, and click [Add].
8. Confirm that the software has been added to the [Allowed programs and features] list.
Confirm that check marks are placed next to Private and Public.
9. Click [OK] in the <Allowed apps> screen.
The software will be registered as an application on the Windows firewall exception list.

■ Another firewall has been detected.

Are any firewall-containing applications installed?

If an application with a firewall function has been installed, it may not be possible to communicate with the projector. (Even if the application is not running, the firewall function may still operate simply because the application has been installed.)

In such cases, firewall settings must be changed in order to allow connection to the wireless network.

For details on the firewall settings, refer to the operating instructions for the application.

■ The wireless LAN connection is lost.

If image display is suspended or communication is cut off, select the projector again in the projector list.

If communication with the device is still not possible, turn off the projector, and wait until it has cooled down (i.e., until the main unit's power monitor changes from orange to red) before turning off the main unit's main power switch (if it has one). If it does not have a switch, disconnect the power cable.

Turn the power back on, and then select the projector again from the software.

■ Communication is cut off during projection.

When communicating with the projector using a computer equipped with Intel Centrino mobile technology (wireless LAN), projection may be canceled depending on the adapter version.

■ Making a wireless LAN connection while using the Internet.

- Internet connections are disabled when using the projector's "SIMPLE" settings or when the projector and computer are communicating directly. Quit the software before use.

■ IEEE802.11g / IEEE802.11n connection is not possible.

- In environments with wireless LAN adapters that support both IEEE802.11b and IEEE802.11g, the connection may be established via IEEE802.11b.
- In some operating environments, the connection may be established via IEEE802.11b, depending on the location, radio signal conditions, distance, or other factors.

Frequently Asked Questions (cont.)

■ Image display is slow or animation is not displayed smoothly.

- Is the computer CPU speed slow?
 - ☞ “System requirements” (page 8)Displaying images and playing animations depend largely on the performance of the computer’s CPU.
- Adverse effects may occur if there is any wireless communication in the vicinity.
- The speed may be slower when any other applications are running concurrently.
- Did you start Microsoft PowerPoint or Windows Media Player before starting this software?
The above applications should only be started after you have started this software.
- Display may be slow when moving images are played.

■ DVD, MPEG2, or Blu-ray Disc content cannot be played on the computer.

- The following restrictions apply when the software is running.
 - DVD, MPEG2, and Blu-ray disc videos cannot be played back.
 - If a 3D-type application was used, application performance may be reduced, images may not be displayed, and proper operation may not be possible.
- Quit the software, and try using a computer cable or HDMI cable connection.
(Depending on the video player used, video playback may not be possible.)

■ There is a time lag between operations on the computer and their resulting image display.

- The software imports the computer screen, compresses the data, and transmits it to the projector. In addition, the received data is extracted on the projector before it is displayed.
Due to this processing time and factors in the wireless LAN environment, some delays will occur. Different computers may also produce varying lag times.

■ The screen saver is not displayed properly during image display.

- Some screen savers may not be displayed properly.

■ “Windows Aero” is disabled.

“Windows Aero” is disabled while the software is running.

■ When attempting to display images from a searched projector, the projector does not turn on.

- If the [STANDBY MODE] setting is set to [ECO], the projector may not turn on for image display.
Perform the following in such cases.
Turn on the projector, and change the [ECO MANAGEMENT] → [STANDBY MODE] setting in the menu from [ECO] to [NORMAL].

■ The wireless LAN connection method, projector name, and network ID are not displayed.

■ A projector cannot be found.

- The wireless LAN connection method, projector name, and network ID may not appear or may not be found, depending on the projector settings. Perform the following in such cases.
Switch the <INPUT> to <Panasonic APPLICATION>.

Trademarks

- Microsoft, Windows, and Windows Media are trademarks or registered trademarks of Microsoft Corporation in the United States and/or other countries.
- Intel, Intel Centrino, Intel Core2 Duo, and Intel Core i5 are trademarks or registered trademarks of Intel Corporation or its subsidiaries in the United States and/or other countries.
- Other company names, product names or other names noted in this manual are trademarks or registered trademarks of the respective companies. Note that ® and TM marks are not indicated in the text of this manual.

Notes:

- Unauthorized use or reproduction of part or all of this software and manuals is strictly prohibited.
- Panasonic Connect Co., Ltd. cannot be held liable for any effects resulting from the use of this software and manuals.
- Panasonic Connect Co., Ltd. reserves the right to revise the software specifications and manual contents without notice.

Panasonic Connect Co., Ltd.

Web Site : <https://panasonic.net/cns/projector/>

© Panasonic Connect Co., Ltd. 2022

M0617AM2042 -PS