

Panasonic



Wall-hanging bracket (Adjustable angle type)

TY-WK65PR20

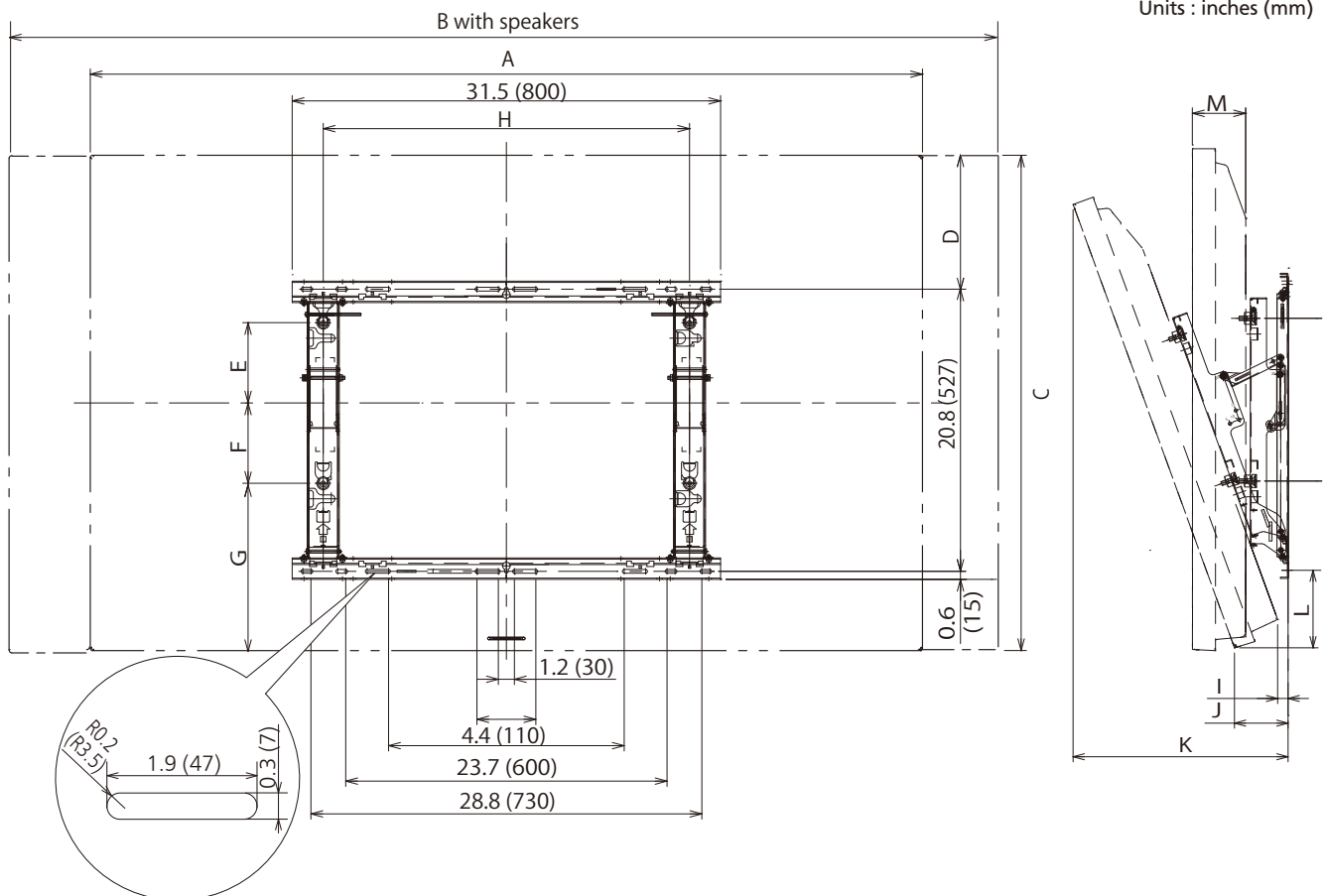
Product specification (design and specification subject to change without notice)

Dimensions (W x H x D)	31.5" x 21.9" x 2.8" (800 x 557 x 71 mm)
Weight	approx. 13.2 lbs. (6.0 kg)
Carton Dimensions (W x H x D)	33.4" x 5.5" x 9.3" (848 x 139 x 235 mm)
Gross weight	approx. 19.8 lbs (9.0 kg)
Accessories	- Allen head countersunk screw (4) - Dished toothed washer (4) - Insulation spacer (4) - Screw for securing unit (2) - Allen wrench (included tool) (1)
UPC Code	037988159772

DIMENSIONS

Cautions: This drawing is not a scale

Units : inches (mm)



Model	Dimension	Attachment angle				
		0°	5°	10°	15°	20°
TH-58PF20	A	55.1 (1399)				
	B	63.5 (1613)				
	C	33.2 (843)				
	D	10.7 (269.5)				
	E	3.6 (89.5)				
	F	8.3 (210.5)				
	G	8.3 (211)				
	H	19.7 (500)				
	I	3.2 (79)	3.0 (75)	2.8 (70)	2.5 (63.5)	2.3 (58)
	J	7.0 (178)	6.7 (171)	6.4 (162)	6.0 (152)	5.6 (141)
	K	7.0 (178)	9.6 (244)	12.1 (307)	14.5 (369)	16.9 (427)
L	1.9 (46.5)	2.3 (59)	2.8 (72)	3.3 (84)	3.8 (96)	
M	3.9 (99)					

Model	Dimension	Attachment angle				
		0°	5°	10°	15°	20°
TH-60PF30, TH-60PF50	A	56.5 (1434)				
	B	65.0 (1649)				
	C	33.6 (852)				
	D	11.0 (279)				
	E	3.4 (84.9)				
	F	8.5 (215.1)				
	G	8.3 (210.5)				
	H	19.7 (500)				
	I	3.2 (79)	3.0 (74)	2.7 (68.5)	2.5 (62.5)	2.3 (56.5)
	J	7.0 (178)	6.8 (171)	6.4 (162)	6.0 (152)	5.6 (141)
	K	7.0 (178)	9.7 (245)	12.2 (309)	14.6 (371)	17.0 (431)
L	1.9 (46)	2.3 (58)	2.8 (71)	3.3 (83.5)	3.8 (95)	
M	3.9 (99)					

Model	Dimension	Attachment angle				
		0°	5°	10°	15°	20°
TH-65PB1, TH-65PB2, TH-65PF20, TH-65PF30, TH-65PF50	A	61.2 (1554)				
	B	69.1 (1754)*1				
	C	36.5 (925)				
	D	9.9 (250)				
	E	5.9 (150)				
	F	5.9 (150)				
	G	12.4 (312.5)				
	H	27.0 (684)				
	I	3.2 (79)	2.6 (65)	2.0 (51)	1.5 (36)	0.8 (20.5)
	J	7.0 (178)	6.4 (161)	5.7 (144)	5.0 (125)	4.2 (105)
	K	7.0 (178)	9.6 (242)	12.0 (304)	14.4 (364)	16.6 (421)
L	5.9 (149)	6.3 (160)	6.8 (171.5)	7.2 (182)	7.6 (191)	
M	3.9 (99)					

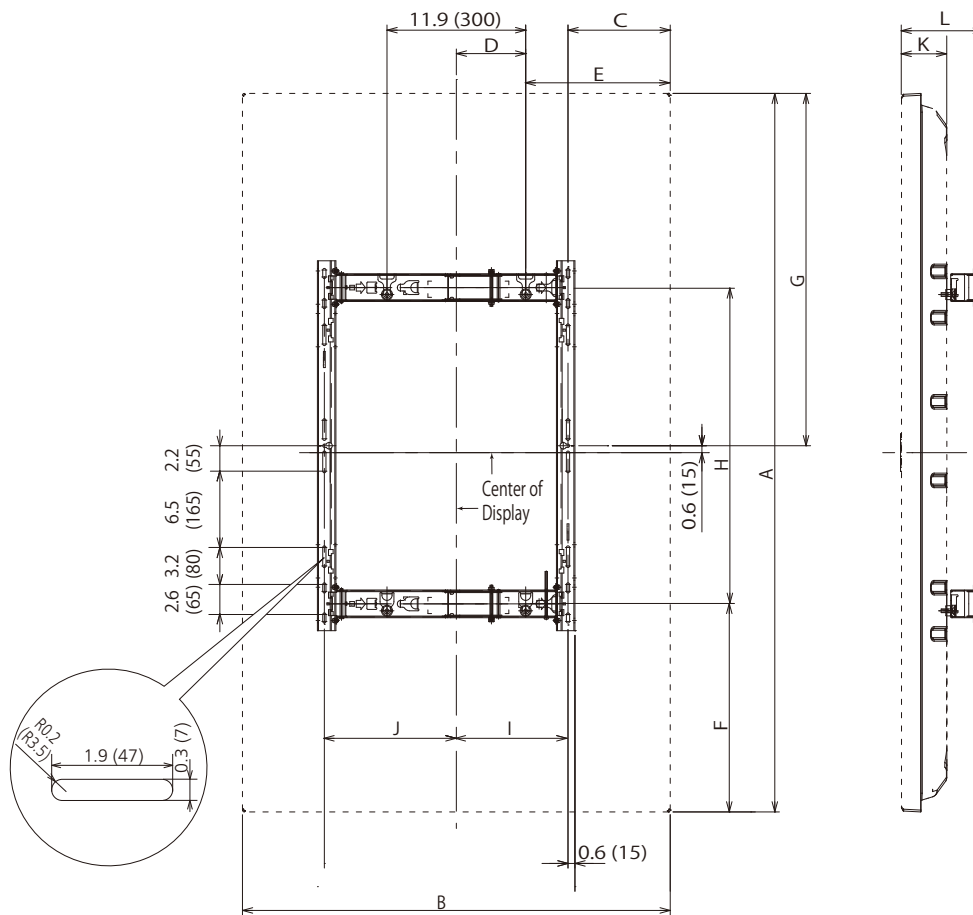
Model	Dimension	Attachment angle 0°	Model	Dimension	Attachment angle 0°	Model	Dimension	Attachment angle 0°
TH-65LFB70*2	A	59.8 (1517)	TH-65LFC70*2	A	58.5 (1484)	TH-65BF1*2	A	59.8 (1517)
	B	_*1		B	_*1		B	_*1
	C	35.2 (892)		C	33.9 (859)		C	35.2 (892)
	D	7.9 (199.8)		D	7.3 (183.5)		D	7.9 (199.8)
	E	7.3 (183.7)		E	7.3 (183.5)		E	7.3 (183.7)
	F	4.6 (116.3)		F	4.6 (116.5)		F	4.6 (116.3)
	G	13.0 (329.7)		G	12.4 (313)		G	13.0 (329.7)
	H	27.0 (684)		H	27.0 (684)		H	26.9 (684)
	I	-		I	-		I	-
	J	-		J	-		J	-
	K	-		K	-		K	-
	L	-		L	-		L	-
M	4.2 (106)	M	3.8 (97)	M	4.3 (108)			

*1 Attached optional speakers are not supported with TH-65PB1, TH-65PB2, TH-65LFB70 and TH-65LFC70.

*2 When used with the LFB/LFC/BF1 Series, only vertical mounting is supported.

DIMENSIONS

Cautions: This drawing is not a scale
Units : inches (mm)



Dimension	Model					
	TH-58PF20	TH-60PF30 TH-60PF50	TH-65PB1, TH-65PB2 TH-65PF20 TH-65PF30, TH-65PF50	TH-65LFB70	TH-65LFC70	TH-65BF1
A	55.1 (1399)	56.5 (1434)	61.2 (1554)	59.8 (1517)	58.5 (1484)	59.8 (1517)
B	33.2 (843)	33.6 (852)	36.5 (925)	35.2 (892)	33.9 (859)	35.2 (892)
C	9.5 (240.5)	9.9 (250)	8.7 (222)	6.7 (170.8)	6.1 (154.1)	6.7 (170.8)
D	3.6 (89.5)	3.4 (84.9)	5.9 (150)	7.2 (183.7)	7.2 (183.7)	7.2 (183.7)
E	13.1 (332)	13.5 (341.5)	12.3 (312.5)	10.3 (262.3)	9.7 (245.6)	10.3 (262.3)
F	17.7 (449.5)	24.9 (632)	17.2 (435)	17.0 (431.5)	16.4 (414.8)	17.0 (431.5)
G	27.0 (684.5)	27.7 (702)	30.0 (762)	29.3 (743.5)	28.7 (726.8)	29.3 (743.5)
H	19.7 (500)	19.7 (500)	27.0 (684)	26.9 (684)	26.9 (684)	26.9 (684)
I	7.2 (181)	7.0 (176.4)	9.5 (241.5)	10.8 (275.2)	10.8 (275.2)	10.8 (275.2)
J	13.7 (346)	13.8 (350.6)	11.3 (285.5)	9.9 (251.8)	9.9 (251.8)	9.9 (251.8)
K	3.9 (99)	3.9 (99)	3.9 (99)	4.2 (106)	3.8 (97)	4.3 (108)
L	7.0 (178)	7.0 (178)	7.0 (178)	7.3 (185)	6.9 (175)	7.4 (187)