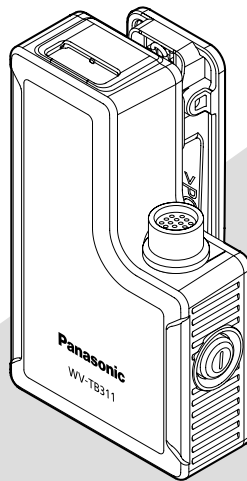


# Panasonic

## Operating Instructions

### Battery Container

Model No. **WV-TB311P/WV-TB311E**



Before attempting to connect or operate this product, please read these instructions carefully and save this manual for future use.

The model number is abbreviated in some descriptions in this manual.

**WARNING:**

- Batteries (battery pack or batteries installed) shall not be exposed to excessive heat such as sunlight, fire or the like.
- The installation shall be carried out in accordance with all applicable installation rules.
- The connections should comply with local electrical code.

**CAUTION:**

Do not open, crush, disassemble or dispose of batteries in fire with temperatures above (60 °C {140 °F}). Mishandling may cause burns, fire or explosions. Dispose of used batteries according to local ordinances and /or regulations.

For U.S. and Canada:

WV-TB311P

For Europe and other countries:

WV-TB311E

For Canada

This Class A digital apparatus complies with Canadian ICES-003.

For U.S.A

**NOTE:** This equipment has been tested and found to comply with the limits for a Class A digital device, pursuant to Part 15 of the FCC Rules. These limits are designed to provide reasonable protection against harmful interference when the equipment is operated in a commercial environment. This equipment generates, uses, and can radiate radio frequency energy and, if not installed and used in accordance with the instruction manual, may cause harmful interference to radio communications.

Operation of this equipment in a residential area is likely to cause harmful interference in which case the user will be required to correct the interference at his own expense.

**FCC Caution:** To assure continued compliance, (example - use only shielded interface cables when connecting to computer or peripheral devices). Any changes or modifications not expressly approved by the party responsible for compliance could void the user's authority to operate this equipment.

For U.S.A

The model number and serial number of this product may be found on the surface of the unit. You should note the model number and serial number of this unit in the space provided and retain this book as a permanent record of your purchase to aid identification in the event of theft.

Model No. \_\_\_\_\_

Serial No. \_\_\_\_\_

**ATTENTION:** The lithium ion/polymer battery you have purchased is recyclable. Please call 1-800-8-BATTERY for information on how to recycle this battery.  
La batterie au lithium-ion/lithium-polymère que vous vous êtes procuré est recyclable. Pour des renseignements sur le recyclage de la batterie, veuillez composer le 1-800-8-BATTERY.



For Europe

We declare under our sole responsibility that the product to which this declaration relates is in conformity with the standard or other normative document following the provisions of Directive 2004/108/EC.

Wir erklären in alleiniger Verantwortung, daß das Produkt, auf das sich diese Erklärung bezieht, mit der folgenden Norm oder normativen Dokument übereinstimmt. Gemäß den Bestimmungen der Richtlinie 2004/108/EC.

Nous déclarons sous notre propre responsabilité que le produit auquel se réfère la présente déclaration est conforme à la norme spécifiée ou à tout autre document normatif conformément aux dispositions de la directive 2004/108/CE.

Nosotros declaramos bajo nuestra única responsabilidad que el producto a que hace referencia esta declaración está conforme con la norma u otro documento normativo siguiendo las estipulaciones de la directiva 2004/108/CE.

Noi dichiariamo sotto nostra esclusiva responsabilità che il prodotto a cui si riferisce la presente dichiarazione risulta conforme al seguente standard o altro documento normativo conforme alle disposizioni della direttiva 2004/108/CE.

Wij verklaren als enige aansprakelijke, dat het product waarop deze verklaring betrekking heeft, voldoet aan de volgende norm of ander normatief document, overeenkomstig de bepalingen van Richtlijn 2004/108/EC.

Vi erklærer os eneansvarlige for, at dette produkt, som denne deklaration omhandler, er i overensstemmelse med standard eller andre normative dokumenter i følge bestemmelserne i direktiv 2004/108/EC.

Vi deklarerar härmed vårt fulla ansvar för att den produkt till vilken denna deklaration hänvisar är i överensstämmelse med standarddokument eller annat normativt dokument som framställs i direktiv 2004/108/EC.

Ilmoitamme yksinomaisella vastuullamme, että tuote, jota tämä ilmoitus koskee, noudattaa seuraavaa standardia tai muuta ohjeellista asiakirjaa, jotka noudattavat direktiivin 2004/108/EC säädöksiä.

Vi erklærer oss alene ansvarlige for at produktet som denne erklæring gjelder for, er i overensstemmelse med følgende norm eller andre normgivende dokumenter som følger bestemmelsene i direktiv 2004/108/EC.

# Contents

Important safety instructions.....	4
Limitation of liability.....	4
Disclaimer of warranty .....	5
Preface.....	5
Precautions .....	5
Major operating controls.....	7
Installation .....	8
Specifications .....	11
Standard accessories .....	11

## Important safety instructions

- 1) Read these instructions.
- 2) Keep these instructions.
- 3) Heed all warnings.
- 4) Follow all instructions.
- 5) Clean only with dry cloth.
- 6) Do not install near any heat sources such as radiators, heat registers, stoves, or other apparatus (including amplifiers) that produce heat.
- 7) Only use attachments/accessories specified by the manufacturer.
- 8) Refer all servicing to qualified service personnel. Servicing is required when the apparatus has been damaged in any way, such as power-supply cord or plug is damaged, liquid has been spilled or objects have fallen into the apparatus, the apparatus has been exposed to rain or moisture, does not operate normally, or has been dropped.

## Limitation of liability

THIS PUBLICATION IS PROVIDED "AS IS" WITHOUT WARRANTY OF ANY KIND, EITHER EXPRESS OR IMPLIED, INCLUDING BUT NOT LIMITED TO, THE IMPLIED WARRANTIES OF MERCHANTABILITY, FITNESS FOR ANY PARTICULAR PURPOSE, OR NON-INFRINGEMENT OF THE THIRD PARTY'S RIGHT.

THIS PUBLICATION COULD INCLUDE TECHNICAL INACCURACIES OR TYPOGRAPHICAL ERRORS. CHANGES ARE ADDED TO THE INFORMATION HEREIN, AT ANY TIME, FOR THE IMPROVEMENTS OF THIS PUBLICATION AND/OR THE CORRESPONDING PRODUCT (S).

## Disclaimer of warranty

IN NO EVENT SHALL Panasonic System Networks Co., Ltd. BE LIABLE TO ANY PARTY OR ANY PERSON, EXCEPT FOR REPLACEMENT OR REASONABLE MAINTENANCE OF THE PRODUCT, FOR THE CASES, INCLUDING BUT NOT LIMITED TO BELOW:

- (1) ANY DAMAGE AND LOSS, INCLUDING WITHOUT LIMITATION, DIRECT OR INDIRECT, SPECIAL, CONSEQUENTIAL OR EXEMPLARY, ARISING OUT OF OR RELATING TO THE PRODUCT;
- (2) PERSONAL INJURY OR ANY DAMAGE CAUSED BY INAPPROPRIATE USE OR NEGLIGENT OPERATION OF THE USER;
- (3) ALL MALFUNCTIONS OR TROUBLES FROM UNAUTHORIZED DISASSEMBLE, REPAIR OR MODIFICATION OF THE PRODUCT BY THE USER, REGARDLESS OF THE CAUSE OF THE MALFUNCTION OR TROUBLE;
- (4) INCONVENIENCE OR ANY LOSS ARISING WHEN IMAGES ARE NOT DISPLAYED, DUE TO ANY REASON OR CAUSE INCLUDING ANY FAILURE OR PROBLEM OF THE PRODUCT;
- (5) ANY PROBLEM, CONSEQUENTIAL INCONVENIENCE, OR LOSS OR DAMAGE, ARISING OUT OF THE SYSTEM COMBINED BY THE DEVICES OF THIRD PARTY;
- (6) ANY CLAIM OR ACTION FOR DAMAGES, BROUGHT BY ANY PERSON OR ORGANIZATION BEING A PHOTOGENIC SUBJECT, DUE TO VIOLATION OF PRIVACY WITH THE RESULT OF THAT SURVEILLANCE-CAMERA'S PICTURE, INCLUDING SAVED DATA, FOR SOME REASON, BECOMES PUBLIC OR IS USED FOR ANY PURPOSE;
- (7) LOSS OF REGISTERED DATA CAUSED BY ANY FAILURE.

## Preface

Battery Container WV-TB311 is the rechargeable battery exclusively designed for WV-TW310 series.

## Precautions

### IMPORTANT:

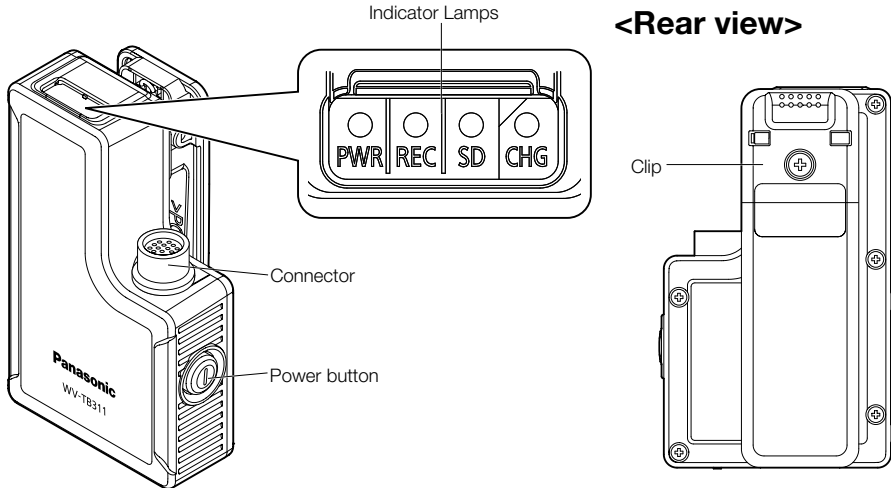
- Refer to the Installation Guide of the Wearable Camera WV-TW310 series for details on installation and so on.
- The lithium ion/polymer battery you have purchased is recyclable. Please call 1-800-8-BATTERY for information on how to recycle this battery.



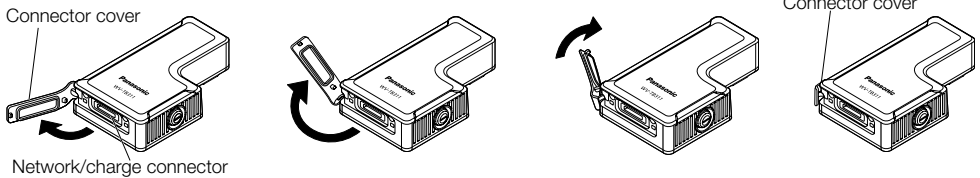
- This product is exclusive for use with Wearable Camera WV-TW310 series. Do not use with other devices.
- Charge this product with Conversion Box WV-TC312 series.

- This product may not be fully charged first time or after a long period of interval (more than 3 months).  
That is due to the characteristics of the product. In such a case, charge and discharge the product several times.
- This product loses power even when the product is not used.  
Charge the product every time before use.
- This product is consumable.  
Lifetime of the product varies depending on the operating environment. In case the product runs out of power after a short time even when the product is correctly charged, replace the product with a new one.
- To maintain the life of this product, turn off the Wearable Camera every time after use.
- To maintain the performance of this product, charge the product at least every six months even when not using the battery for a long period of time (over one year).
- Do not throw this product into the fire, or expose the product to the heat.
- Do not stick pointed objects or give shocks to this product.
- Do not disassemble or modify the product.
- Do not contact metallic objects to the terminals of this product.
- Do not expose this product to severe shock.
- Do not store this product in extremely hot places.
- Do not charge, use, or leave this product near the fire or under high temperatures such as under the sun.
- Do not throw away used batteries. Instead, recycle them in accordance with laws and regulations.
- In case troubles occur, stop using this product immediately.
- The capacity of the battery is reduced each time it is used. In particular, recharging or using the battery in high-temperature locations increases deterioration.

# Major operating controls



The connector of the battery container can be opened in the following way and fixed to the side of the battery container. When storing the battery container in the stand, open the connector cover and fix it to the side of the battery container.



## About the battery container's indicators

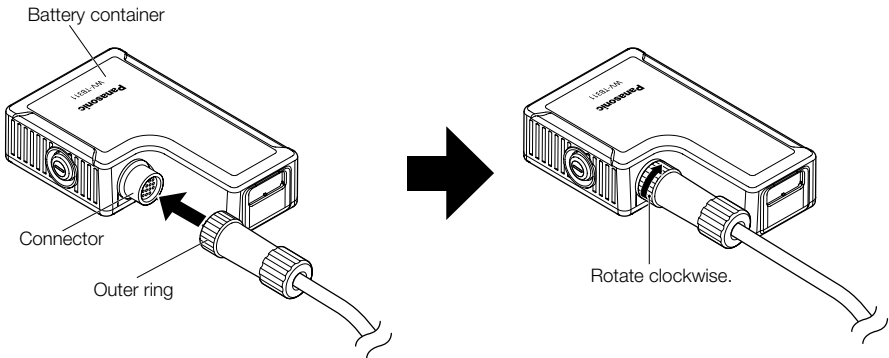
The battery container's indicators light as follows according to the status of the camera. Understanding how and when the indicators light can help you troubleshoot problems with the camera.

Indicator	Lit	Slow blinking	Fast blinking	Light off
PWR	ON (Remaining battery time: Long)	ON (Remaining battery time: Short)	Activating	Power OFF (Remaining battery time: None)
REC	Recording images and audio	Recording images	①Writing recorded data ②Accessing the SD memory card	Not recording Pre-recording
SD	Remaining SD recording time: Long	Remaining SD recording time: Short	SD memory card error <ul style="list-style-type: none"> <li>•The SD memory card is not inserted</li> <li>•The SD memory card is locked</li> <li>•There is no remaining memory</li> <li>•A read/write error has occurred</li> </ul>	-
CHG	Green: Charging Red: Charging error detected	-	-	Operating normally

# Installation

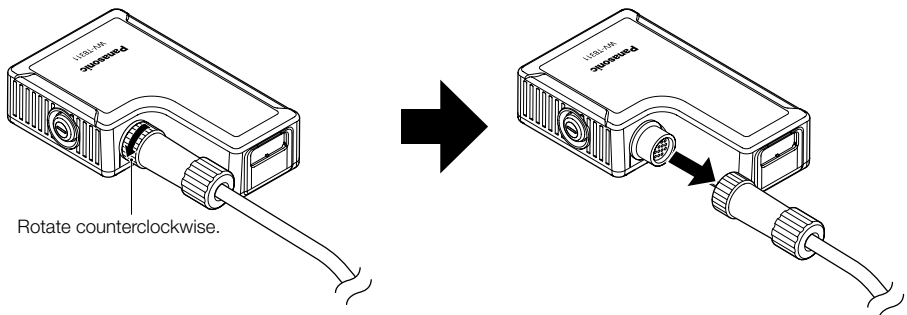
## Connecting the battery container to the camera

- 1 Align the direction of the mark on the connector on the end of the connecting cable to the direction of the mark on the battery container.
- 2 Insert the connector of the connecting cable straight into the connector of the battery container, and then lock it by rotating the outer ring of the connecting cable clockwise.



## Removing the battery container from the camera

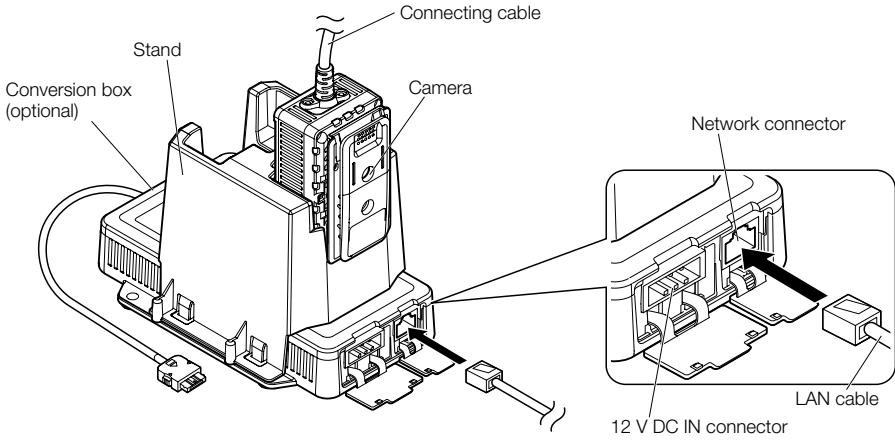
To remove the camera from the battery container, unlock the connector by rotating the outer ring counterclockwise, and then pull the connecting cable straight.



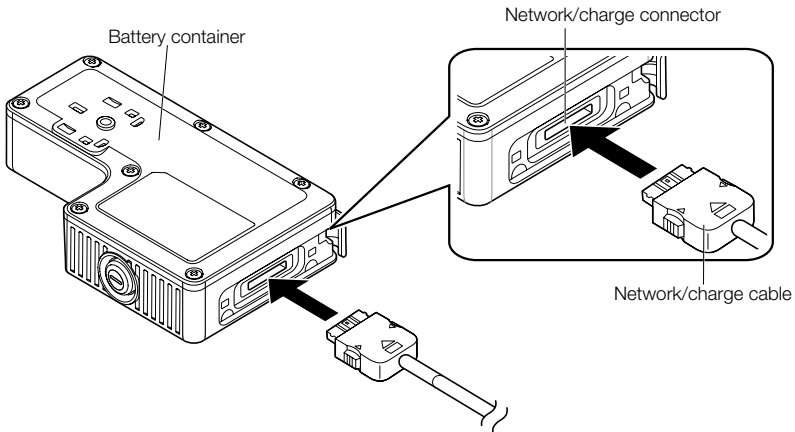


# Connecting the conversion box (optional) to the battery container

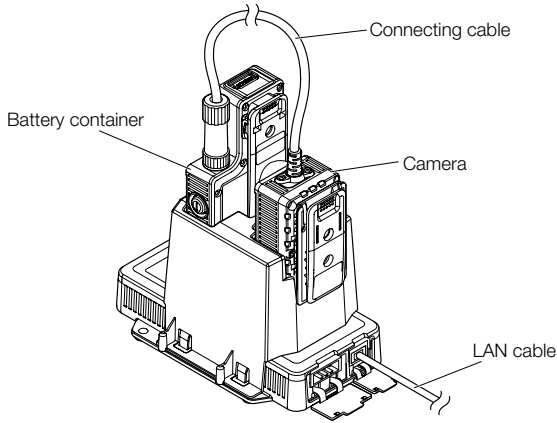
- 1 Connect the power to the conversion box (optional).  
Connect 12 V DC or PoE hub for the power source.



- 2 Connect the network/charge cable of the conversion box (optional) to the network/charge connector of the battery container.  
Insert the cable into the connector until a click is heard. Ensure that they are connected in the correct direction.



- 3 Connect the connecting cable of the camera to the connector of the battery container. Then charging starts.



---

**IMPORTANT:**

- Recharging will not begin if the temperature of the internal battery pack is outside of the allowable temperature range (0 °C to +50 °C {32 °F to 122 °F}).
- Charging begins automatically when the temperature enters the allowable range.
- Recharging will stop after 6 hours from when the connection was made. (Under normal conditions, recharging finishes within 3.5 hours.)
- Exposing the battery to high temperatures may cause battery deterioration (reduced battery capacity and recharging cycle).

---

**Note:**

- When the camera is connected to a PoE hub without the battery container connected, the power indicator of the conversion box (optional) may blink. This is not a malfunction.
-

## Specifications

### ● Basic

Rated voltage and capacity:	3.7 V DC/ 2450 mAh/ 9.1 Wh
Battery type:	Rechargeable Li-ion battery
Ambient operating temperature:	-10 °C to +50 °C {14 °F to 122 °F}
Humidity:	Less than 90 % (no condensation)
Dimensions:	60 mm (W) x 100 mm (H) x 36.5 mm (D) {2-3/8 inches (W) x 3-15/16 inches (H) x 1-7/16 inches (D)}
Mass:	Approx. 150 g {0.33 lbs.}
Finish:	Black

\* Specifications are subject to change without notice.

## Standard accessories

Operating Instructions (this document) ..... 1 pc.  
Warranty card (For WV-TB311P)..... 1 pc.

## Information for Users on Collection and Disposal of Old Equipment and used Batteries



These symbols on the products, packaging, and/or accompanying documents mean that used electrical and electronic products and batteries should not be mixed with general household waste.

For proper treatment, recovery and recycling of old products and used batteries, please take them to applicable collection points, in accordance with your national legislation and the Directives 2002/96/EC and 2006/66/EC.

By disposing of these products and batteries correctly, you will help to save valuable resources and prevent any potential negative effects on human health and the environment which could otherwise arise from inappropriate waste handling.

For more information about collection and recycling of old products and batteries, please contact your local municipality, your waste disposal service or the point of sale where you purchased the items.

Penalties may be applicable for incorrect disposal of this waste, in accordance with national legislation.



### For business users in the European Union

If you wish to discard electrical and electronic equipment, please contact your dealer or supplier for further information.

### [Information on Disposal in other Countries outside the European Union]

These symbols are only valid in the European Union. If you wish to discard these items, please contact your local authorities or dealer and ask for the correct method of disposal.



**Cd**

### Note for the battery symbol (bottom two symbol examples):

This symbol might be used in combination with a chemical symbol. In this case it complies with the requirement set by the Directive for the chemical involved.

### For U.S. and Canada:

#### **Panasonic System Communications Company of North America, Unit of Panasonic Corporation of North America**

[www.panasonic.com/business/](http://www.panasonic.com/business/)  
For customer support, call 1.800.528.6747  
Three Panasonic Way, Secaucus,  
New Jersey 07094 U.S.A.

#### **Panasonic Canada Inc.**

5770 Ambler Drive, Mississauga,  
Ontario, L4W 2T3 Canada  
(905)624-5010  
[www.panasonic.ca](http://www.panasonic.ca)

### For Europe and other countries:

#### **Panasonic Corporation**

<http://panasonic.net>

Importer's name and address to follow EU rules:

Panasonic Testing Centre  
Panasonic Marketing Europe GmbH  
Winsbergring 15, 22525 Hamburg F.R.Germany