

Face Recognition System WV-ASF900

Instructions how to upgrade

From V3.0x to V3.10, and from V4.0x to V4.10

Outline

The upgrade uses the tools as follow;

- ConfigTool : WV-ASF900 ConfigurationTool (Shortcut on desktop)

- Update tool : Select update tool for installed version of WV-ASF900
 For V3.0x: ASF900_v3_0xtoV3_10_UpdateTool
 For V4.0x: ASF900_v4_0xtoV4_10_UpdateTool

Check version file by opening with notepad.exe. ("C:\ASF900\version")

Procedure outline:

No	Procedure	Contents	Tool for use	Time (Ref.)
1	Stop the sytem	Stop the system, and confirm the server is master or slave.	Config tool	5~30 min.
2	Update the system	- Copy differential files - Update system information - Clean up database	Update tool	1 min.
				1 min.
				5~30 min.
3	Start the system	Confirm system version and start the system	Config tool	5~15 min.
4	Check the system working	Check that the system works properly.	–	30 min.

1

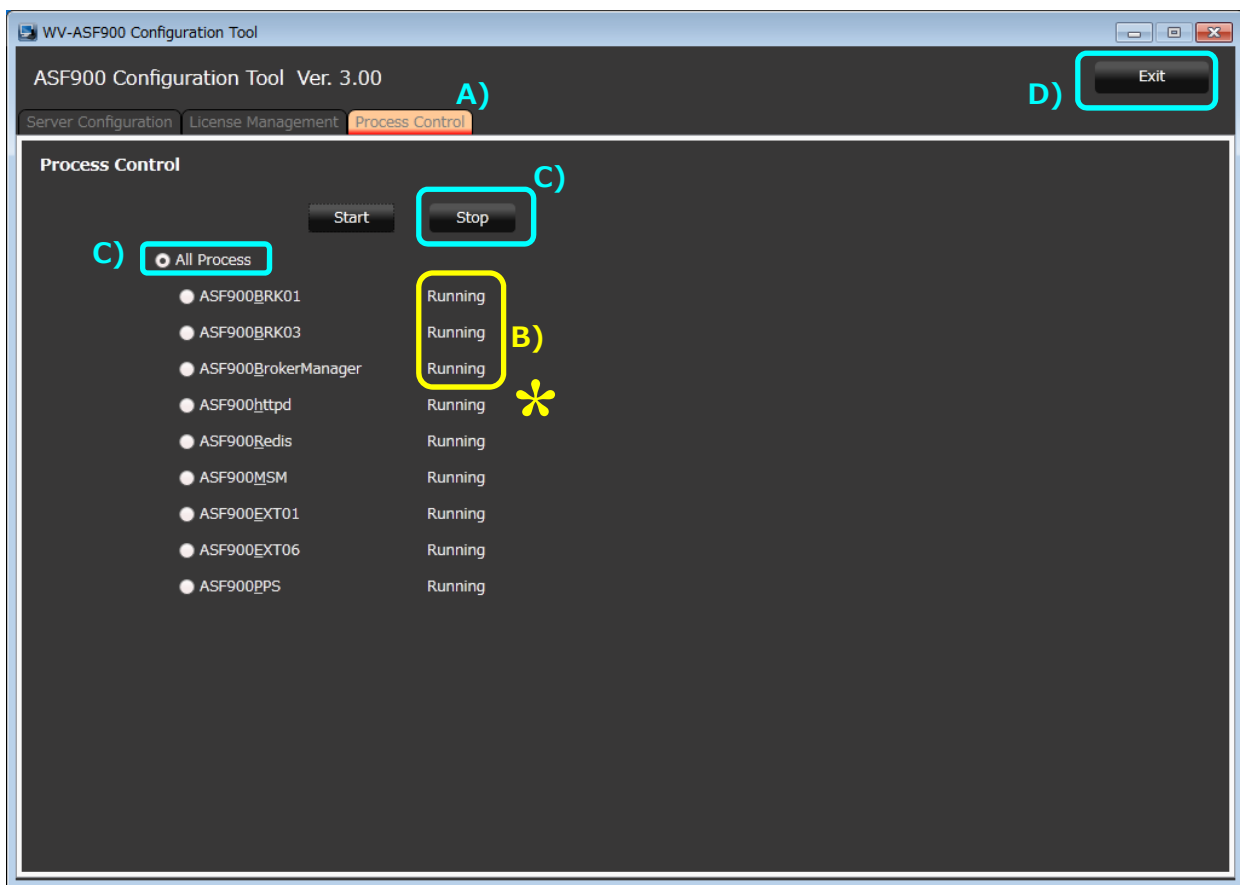
2

3

4

1. Stop the system

- A) Run “WV-ASF900 Configuration Tool” and click “Process Control” tab.
- B) Check whether the server is master server or slave server.
If “*” is “Not Installed”, this is slave server. Otherwise this is master server.
(The following figure is a sample of master server)
- C) Make sure “All Process” is selected, then click “Stop” button.



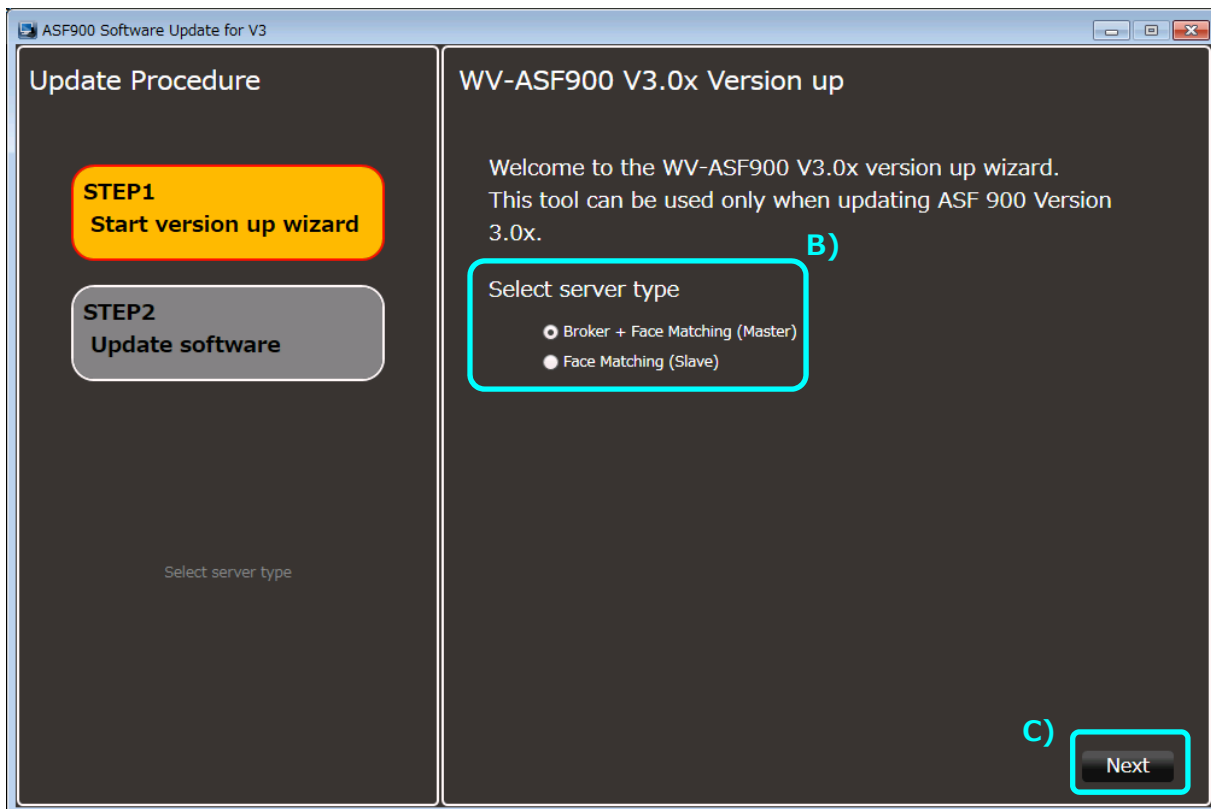
- D) Make sure all processes are “Stopped”, then click “Exit” button.



2. Update the system

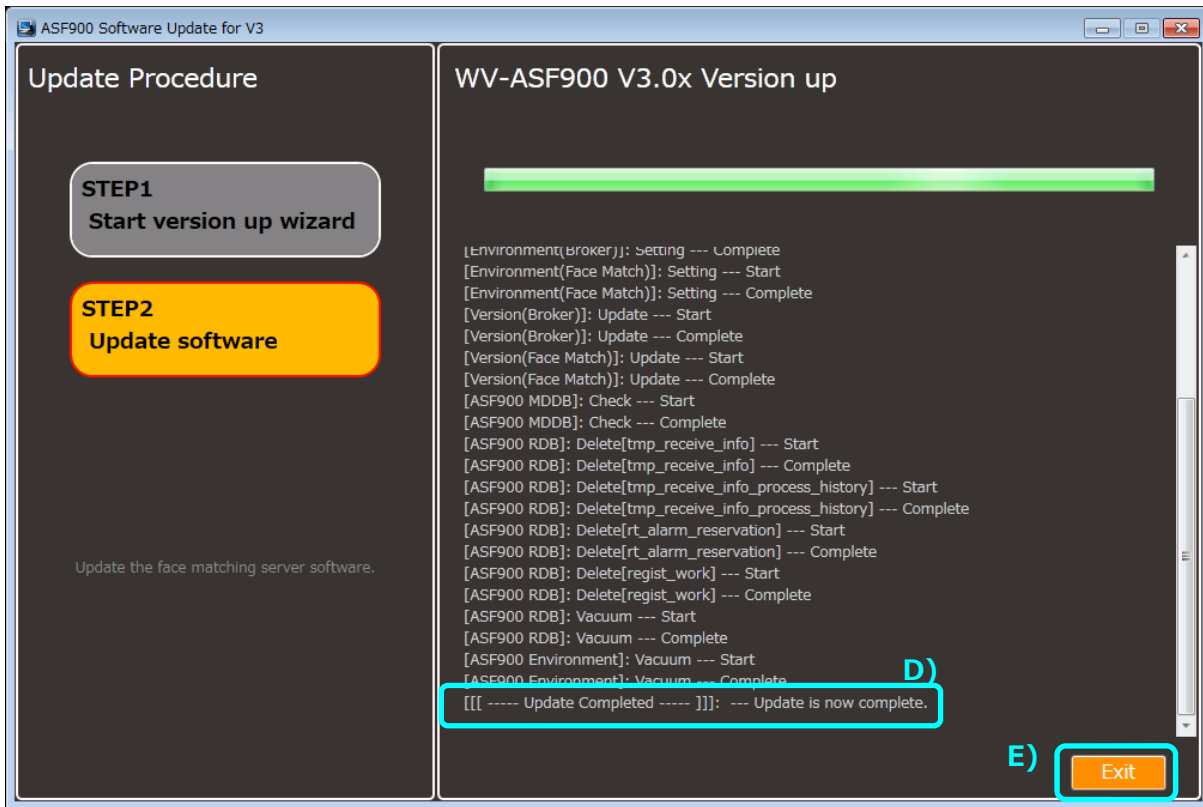
Execute Copy differential files, Update system information and Clean up database by Update tool.

- A) Run “ASF900VersionUp.exe”
in the folders of “ASF900_v3_0xtoV3_10_UpdateTool” for V3.0x or
in the folders of “ASF900_v4_0xtoV4_10_UpdateTool” for V4.0x.
- B) “Select server type” must be selected the server type of WV-ASF900 (either “Master server” or “Slave server”)
*Select the server type which is checked in 1. Stop the system, step B)
- C) Click “Next” button



D) Make sure if “Update Completed” is displayed, then click “Next” button.

- * Command prompt will appear on updating, but do not close it.
- * It takes 5 ~ 30 min. according to system conditions.
- * If update is failed, “Exit” button is not appeared. Close the tool by clicking X icon on title bar, confirm the update procedures, and execute from “Stop the system” again.



E) Click “Exit” button, ASF900VersionUp.exe is closed.

1

2

3

4

3. Start the system

- A) Run “WV-ASF900 Configuration Tool” and click “Process Control” tab.
- B) Check that the operated server is the latest version. (V3.10.0 or V4.10.0)
(The following figure is a sample of master server.)

[Master server]

1. Check the Broker server version.

The screenshot shows the 'WV-ASF900 Configuration Tool' window. The 'Broker node' dropdown is set to '192.168.0.190'. In the left sidebar, the 'Broker [192.168.0.190]' node is selected and highlighted with a red box. The 'Node Information' panel on the right shows the version '(v3.07.0)' highlighted with a red box. Below this, the 'Node List' table is displayed:

No.	Server ID	Node No.	Node type	IP Address	Port
01	2	1	Face Matching Node	192.168.0.190	80
02	3	2	Face Matching Node	192.168.0.191	80

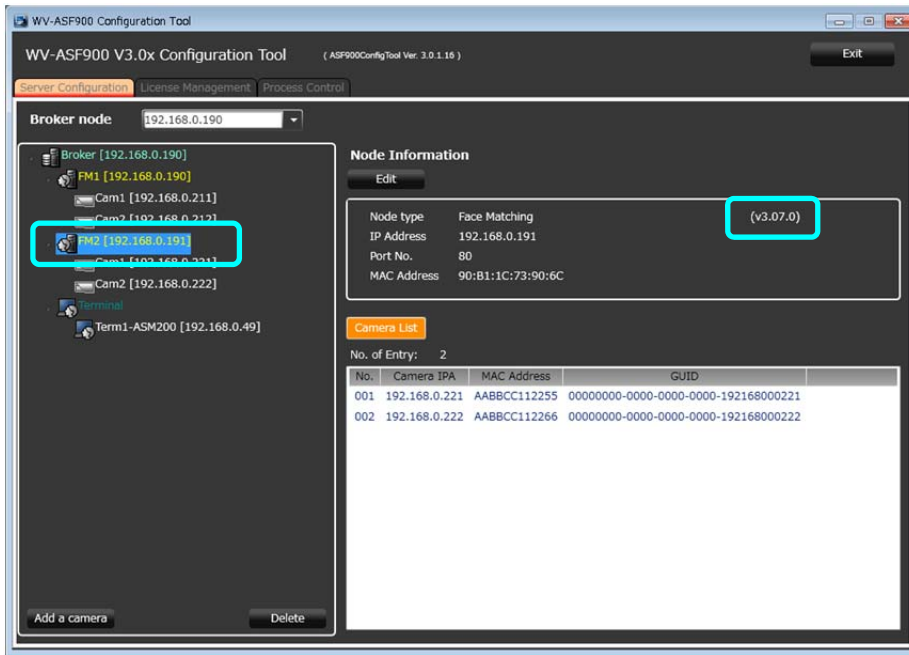
2. Check the Faca Matchingserver (FM1) version.

The screenshot shows the 'WV-ASF900 Configuration Tool' window. The 'Broker node' dropdown is set to '192.168.0.190'. In the left sidebar, the 'FM1 [192.168.0.190]' node is selected and highlighted with a red box. The 'Node Information' panel on the right shows the version '(v3.07.0)' highlighted with a red box. Below this, the 'Camera List' table is displayed:

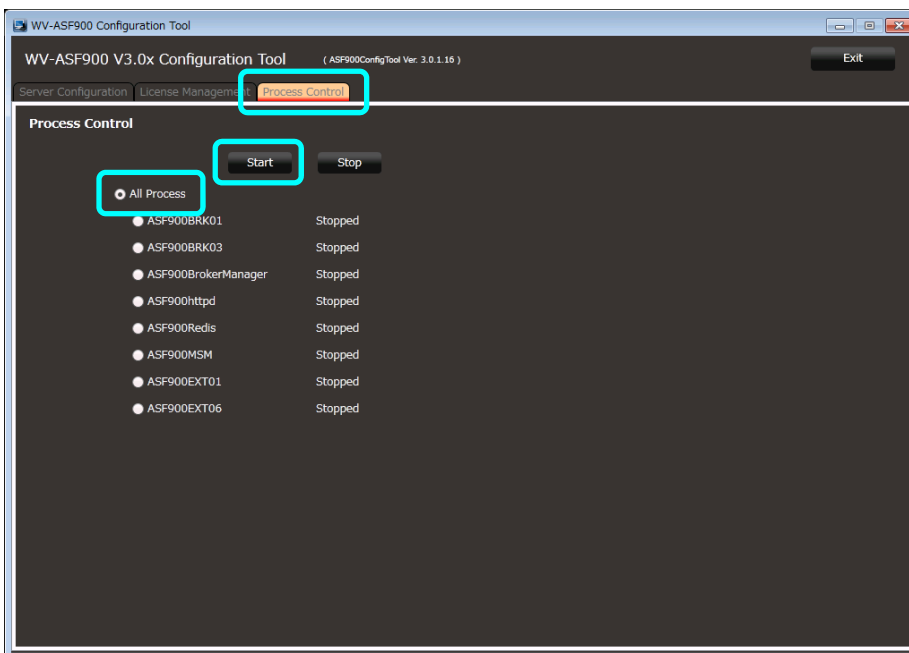
No.	Camera IPA	MAC Address	GUID
001	192.168.0.211	AABBCC112233	00000000-0000-0000-0000-192168000211
002	192.168.0.212	AABBCC112244	00000000-0000-0000-0000-192168000212

[Slave server]

Check the Face Matchingserver (FM2 or later) version.



C) Run "WV-ASF900 Configuration Tool" and click "Process Control" tab.
Make sure "All Process" is selected, then click "Start" button.



D) Make sure all processes are "Running", then click "Exit" button.



4. Check the system working

A) Operation test

1. Capture the face on the camera for face recognition system
2. Search the faces on Face search tab in Face search monitor of ASM200 or ASM970 at specified time of step 1. Search result is shown with the faces which are captured in step 1.
* Refer to “Search face” - “Search by time and date”
in WV-ASM200 Operating Instructions or WV-ASM970 FaceSearchMonitor.chm
3. Select the face image, register the face in right click menu “Newly register this face image”
* Refer to “Register a face for the alarm notification” - “Register from a face thumbnail image”
in WV-ASM200 Operating Instructions or WV-ASM970 FaceSearchMonitor.chm
4. Capture the face on the camera for face recognition system again.
Check that face alarm is shown on Alarm tab.
* Refer to “Check the alarm notification” - “Display the "Alarm notification" window”
in WV-ASM200 Operating Instructions or WV-ASM970 FaceSearchMonitor.chm
5. Click “Face management” button, Delete the face image which is registered in step 3 on List of registered faces window.