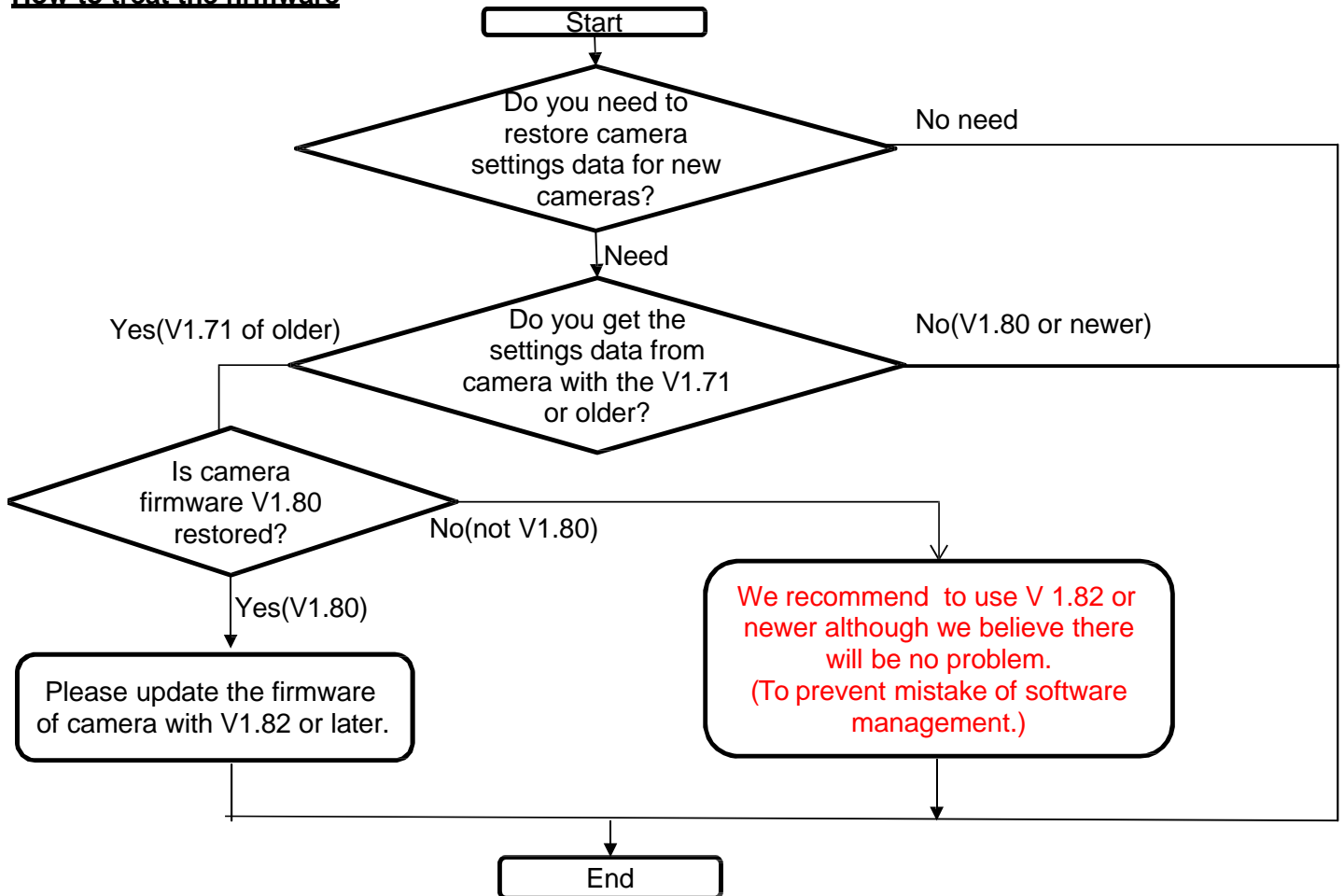


Important information about backing up/restoring the settings data of camera firmware ver 1.71 or older;

When you use the camera with firmware V1.80 or older, there is a possibility to cause the malfunction.
We recommend to use firmware V1.82 (or newer).

How to treat the firmware



How to distinguish the software version from the setting file with PSSCT

When you get the settings data of cameras with PSSCT, you can check the firmware version number from the folder name or file name. (The picture as follow shows V1.58 for example.)

