

Facial Recognition Server Software WV-ASF950 Series

Instructions upgrade from V1.0x to V1.02

Outline

The upgrade uses the tools as follow;

- ConfigTool : WV-ASF950 ConfigurationTool (Shortcut on desktop)
- Update tool: UpdateTool_for_ASF950_CH_R_V1_02
 - * Check version file by using notepad, etc. ("C:\ASF900\version")

Procedure outline:

No	Procedure	Contents	Tool for use
1	Stop the system	Stop the system, and confirm the server type is master or slave server	Config tool
2	Update the system	Copy new files and update system information	Update tool
3	Start the system	Confirm system version and start the system	Config tool
4	Update camera information	Updates the camera information to detect face mask	Config tool

1

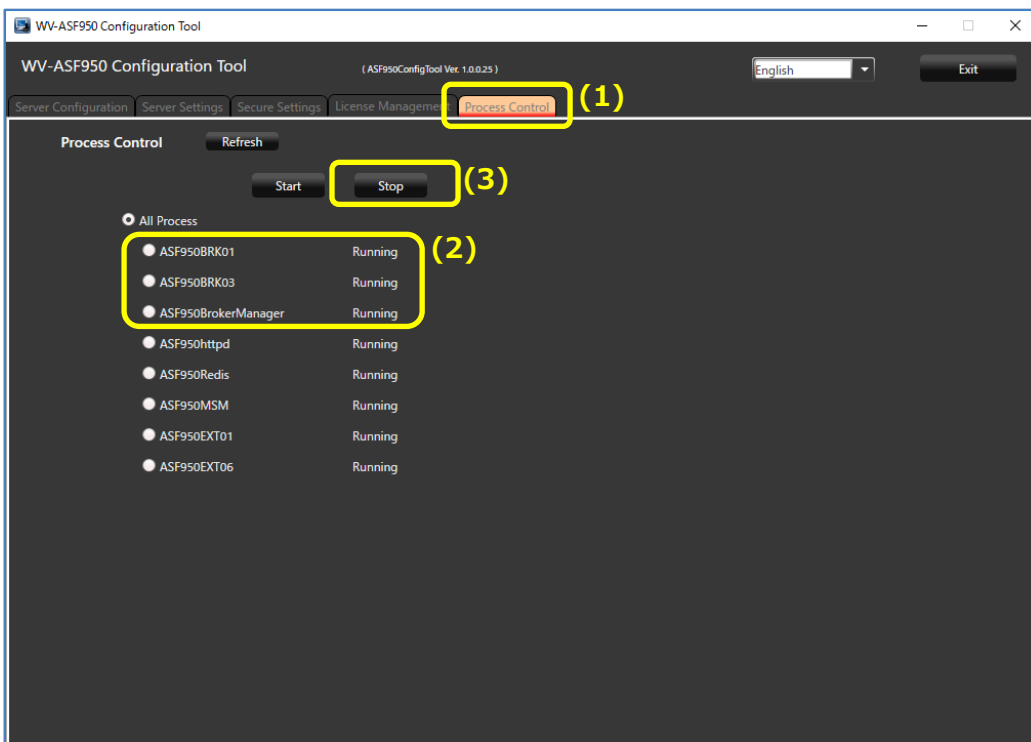
2

3

4

1. Stop the system

- (1) Run “WV-ASF950 Configuration Tool” and click “Process Control” tab.
- (2) Check whether the server type is master server or slave server.
“Not Installed” is shown in the rectangle (2) of following figure, this is slave server.
Otherwise this is master server.
(The following figure is a sample of master server)
- (3) Make sure “All Process” is selected, then click “Stop” button.



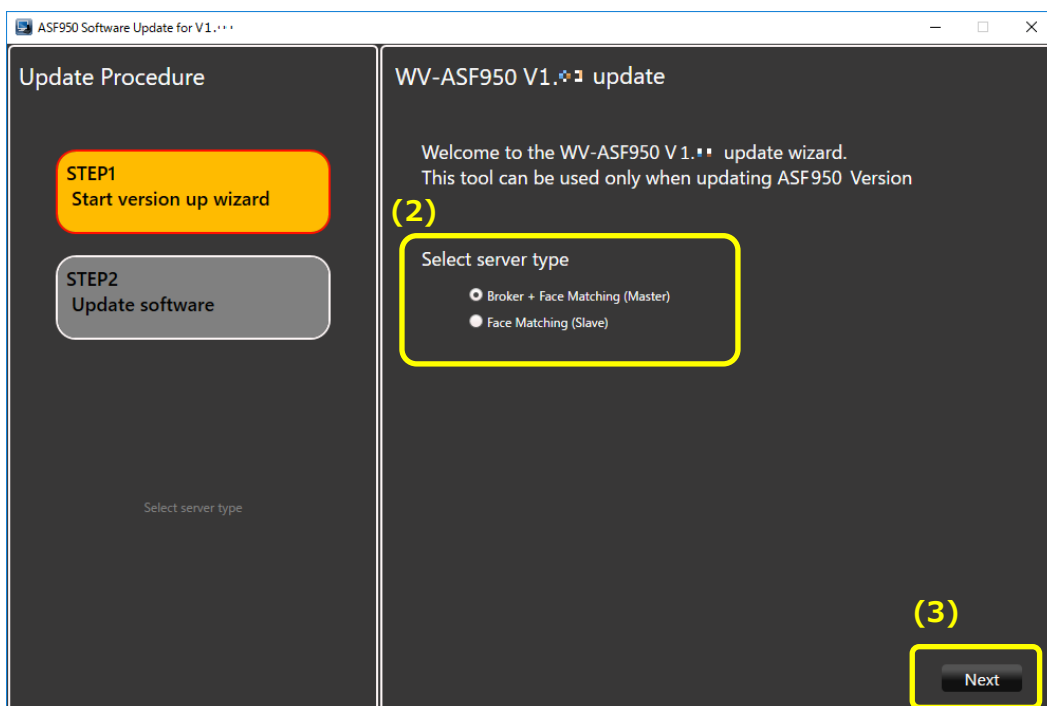
- (4) Make sure all processes are “Stopped”, then click “Exit” button.



2. Update the system

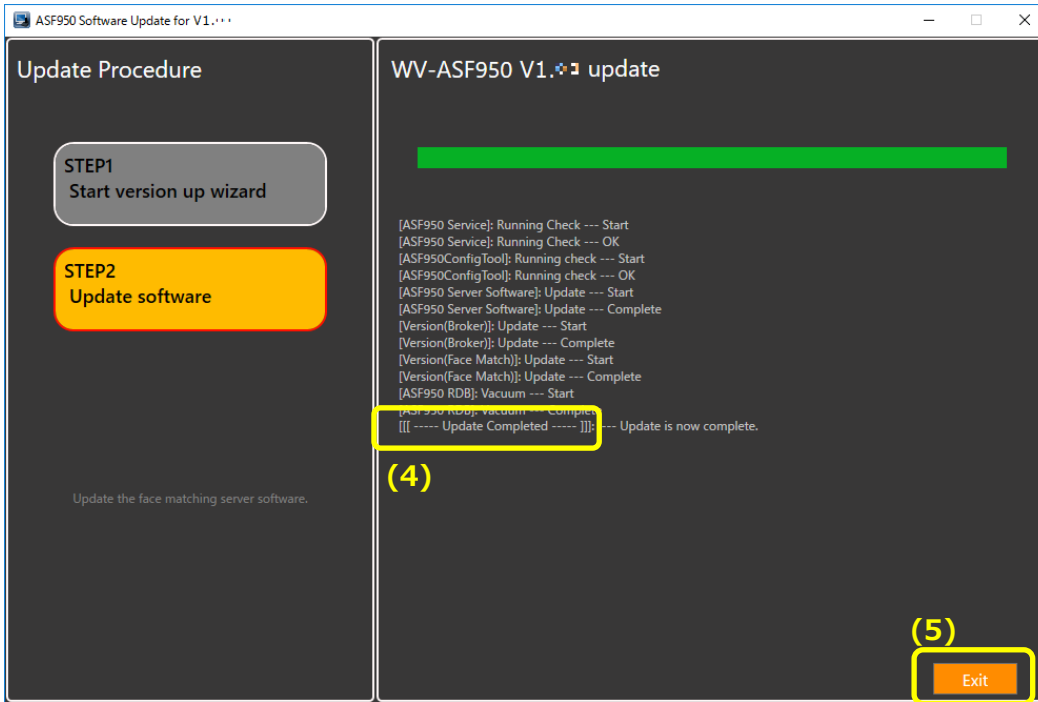
Execute Copy new files and update system information by update tool.

- (1) Run "ASF950UpdateTool.exe" in the folders of "UpdateTool_for_ASF950_CH_R_V1_02" folder.
- (2) In "Select server type", the automatically determined server type (master or slave) is selected. Confirm that it matches what you confirmed in "1. Stop the system (2)".
- (3) Click "Next" button

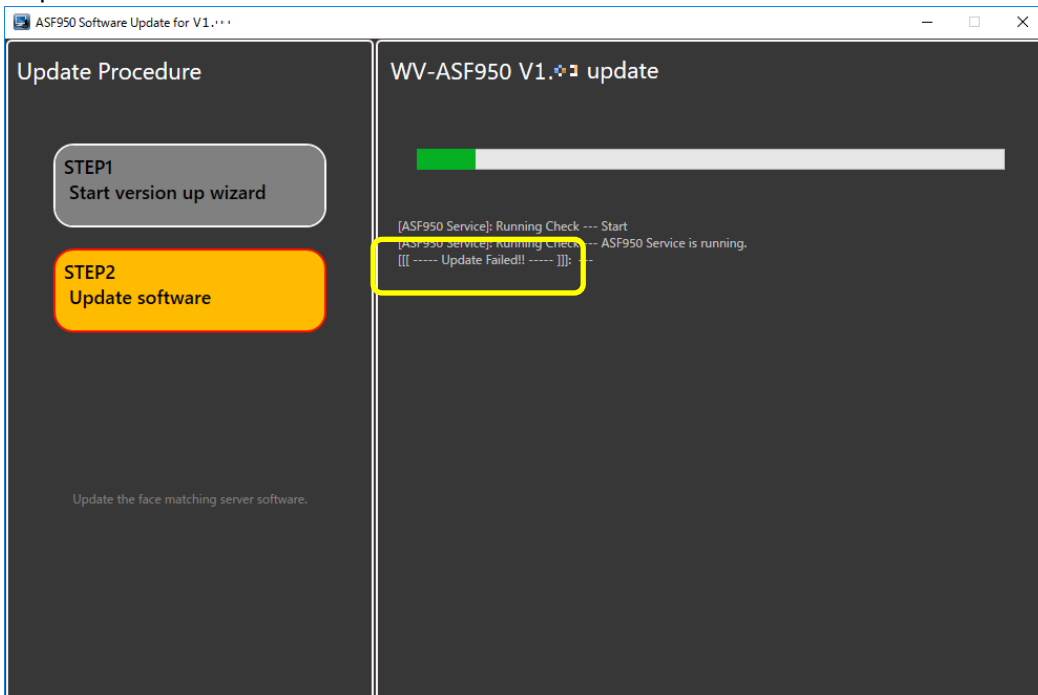


- (4) When updating is successful, "Update Completed" is displayed.
 If it fails, "Update Failed" will be displayed and the "Exit" button will not be displayed.
 Close the tool by clicking the X icon in the title bar, check the procedure and execute from "1. Stopping the system" again.
 * While updating, the command prompt will be displayed, but please do not close it.

- Update Completed -



- Update Failed -



- (5) Click "Exit" button, close "ASF950UpdateTool.exe".

1

2

3

4

3. Start the system

- (1) Run “WV-ASF950 Configuration Tool”
- (2) Check that config tool version is “V1.0.0.25”.
And check that server version is “V1.02”

[Master server]

1. Check the Broker server version.

The screenshot shows the WV-ASF950 Configuration Tool interface. The title bar indicates the version is (ASF950ConfigTool Ver. 1.0.0.25). The main window has tabs for Server Configuration, Server Settings, Secure Settings, License Management, and Process Control. The Broker Node dropdown is set to 192.168.0.215. In the left sidebar, the Broker [192.168.0.215] is selected. The Node Information panel shows the following details:

- Node type: Broker (v1.02)
- IP Address: 192.168.0.215
- Port No.: 80
- MAC Address: 18:60:24:87:9A:1F

The Node List table shows 2 entries:

No.	Server ID	Node No.	Node type	IP Address	Port No.
01	2	1	Face Matching Node	192.168.0.215	80
02	3	2	Face Matching Node	192.168.0.216	80

2. Check the Face Matching server (FM1) version.

The screenshot shows the WV-ASF950 Configuration Tool interface. The title bar indicates the version is (ASF950ConfigTool Ver. 1.0.0.25). The main window has tabs for Server Configuration, Server Settings, Secure Settings, License Management, and Process Control. The Broker Node dropdown is set to 192.168.0.215. In the left sidebar, the FM1 [192.168.0.215] is selected. The Node Information panel shows the following details:

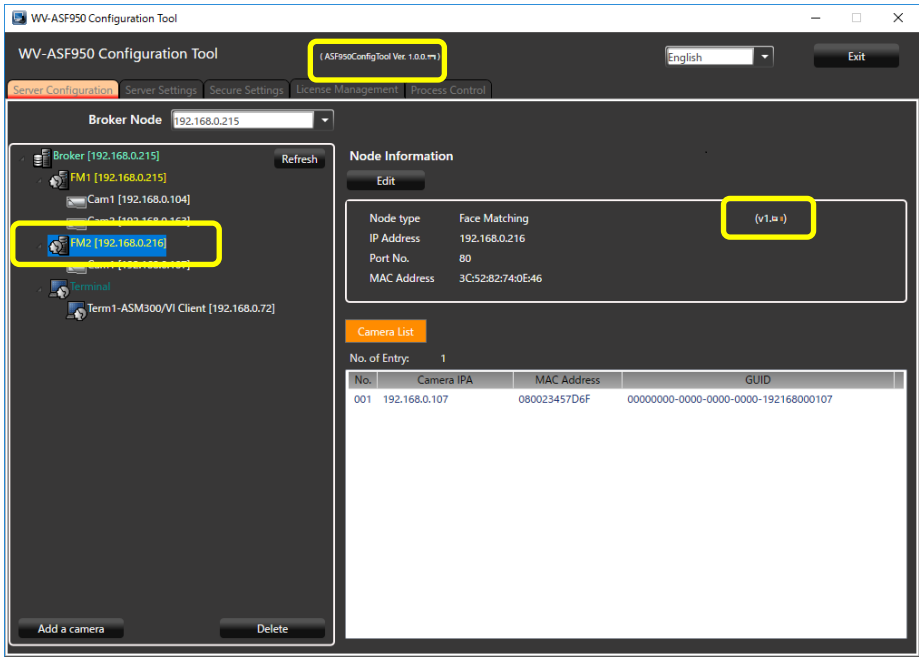
- Node type: Face Matching (v1.02)
- IP Address: 192.168.0.215
- Port No.: 80
- MAC Address: 18:60:24:87:9A:1F

The Camera List table shows 2 entries:

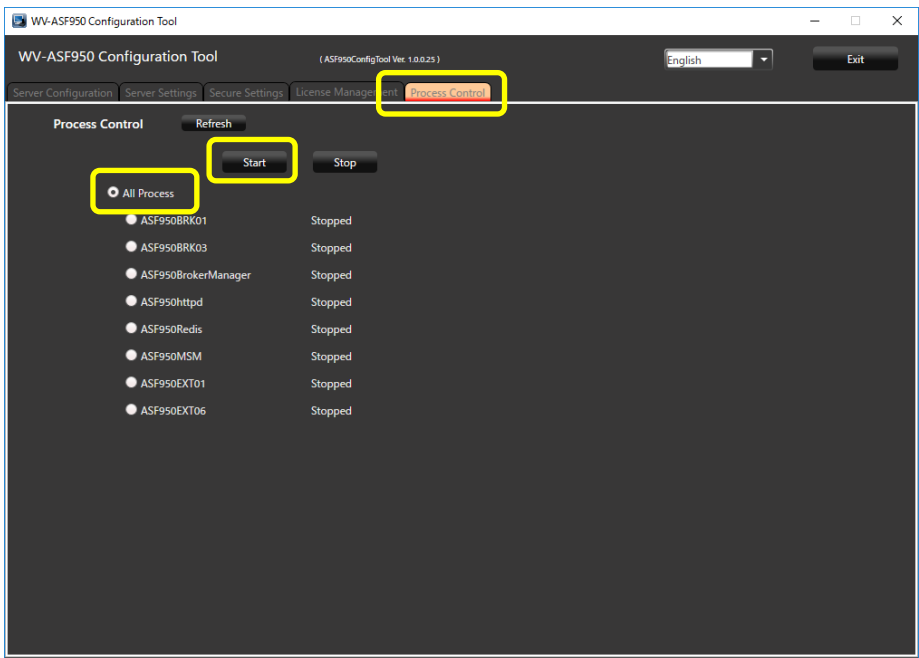
No.	Camera IPA	MAC Address	GUID
001	192.168.0.104	0800233F2422	00000000-0000-0000-0000-192168000104
002	192.168.0.163	BCC34271CCF3	00000000-0000-0000-0000-192168000163

[Slave server]

Check the Face Matching server (FM2 or later) version.



(3) Run "WV-ASF950 Configuration Tool" and click "Process Control" tab. make sure "All Process" is selected, then click "Start" button.



(4) Make sure all processes are "Running", then click "Exit" button.

1

2

3

4

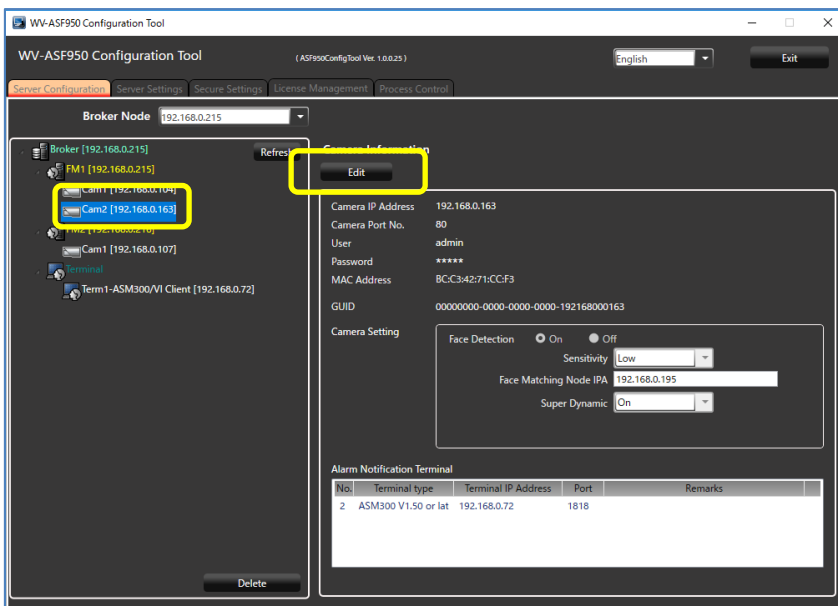
4. Update camera information

When using the face mask detection function of the camera (supported cameras only in i-PRO EXTREME series), it is necessary to update the camera information after camera firmware is updated in V2.00 or later.

(1) Run “WV-ASF950 Configuration Tool” **on master server.**

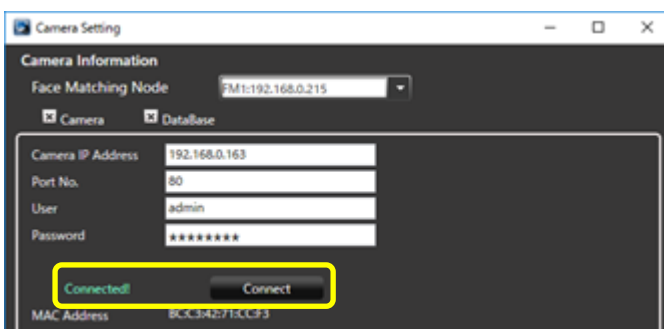
(2) Select “Server Configuration” tab.

Select camera in device tree for updating information and click “Edit” button.
Camera setting window is shown.



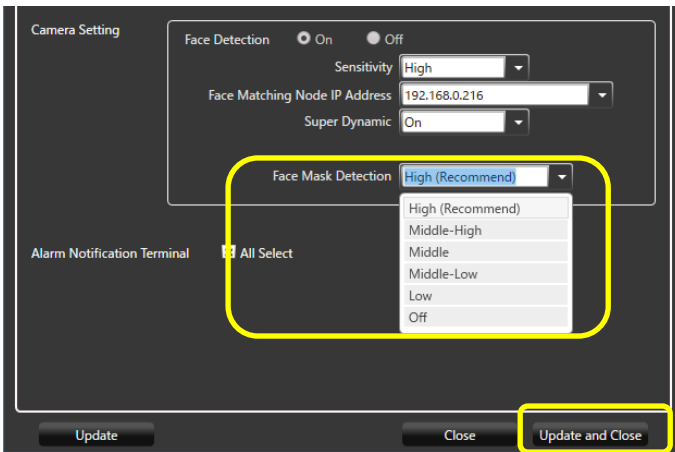
(3) Click “Connect” button.

“Connected” is shown, and configuration tool connects the camera and gets camera information.



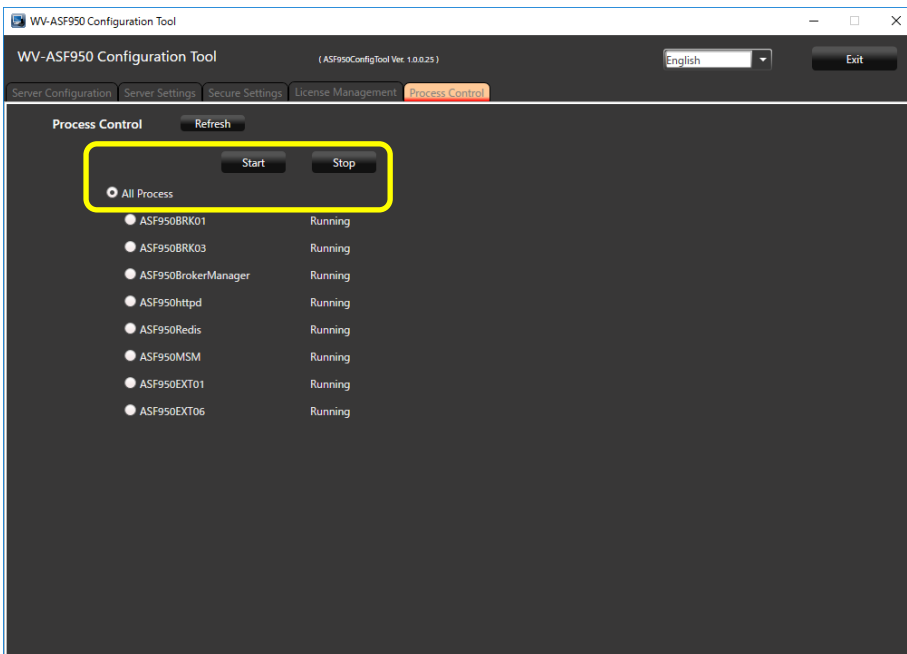
Face Mask Detection menu is shown. Select Face Mask Detection level in pull-down menu.

* High level is recommended.
And Click “Update and Close” button.



(4) Repeat steps (2)-(3) for other cameras as well.

(5) On “Process Control” tab, stop all processes and start them again in order to reflect the setting.



(6) If there is **another slave server**, stop all processes and start them again.