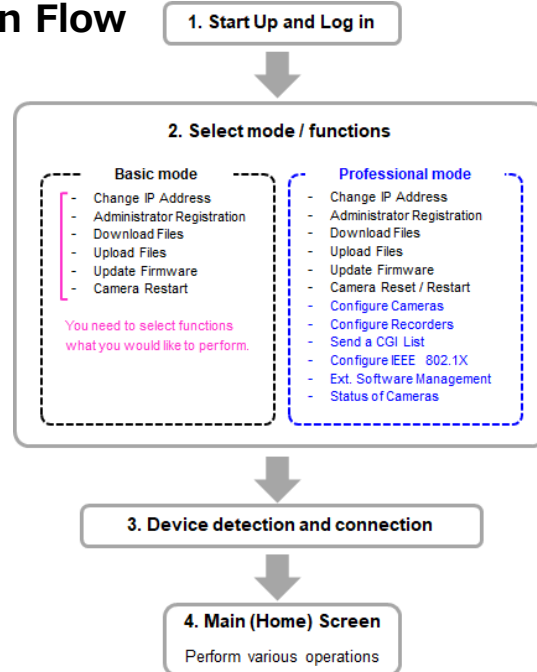


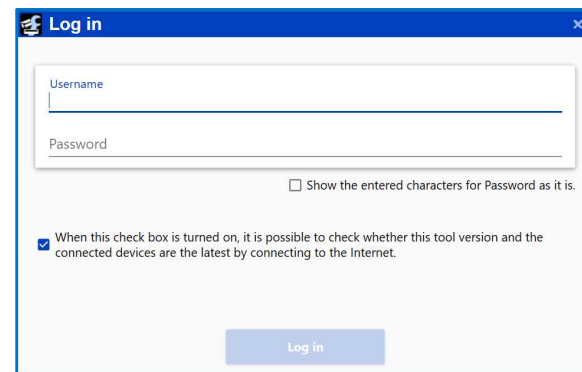
## Operation Flow



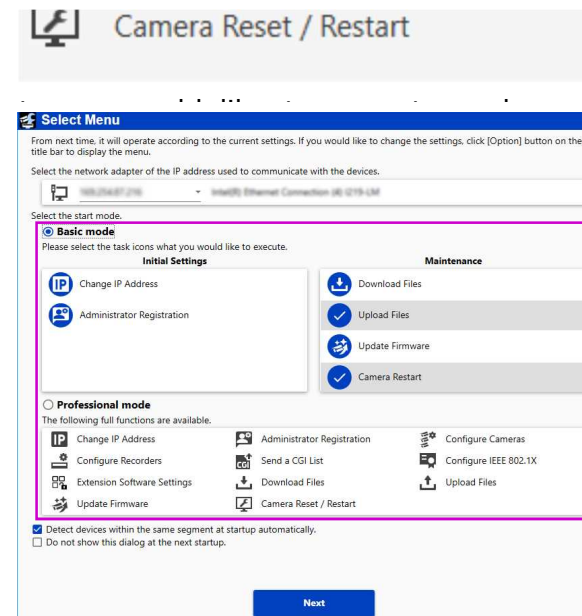
## 1. Start Up and Log in



Start Menu on Windows OS ->  
[Panasonic] -> [i-PRO Configuration Tool]

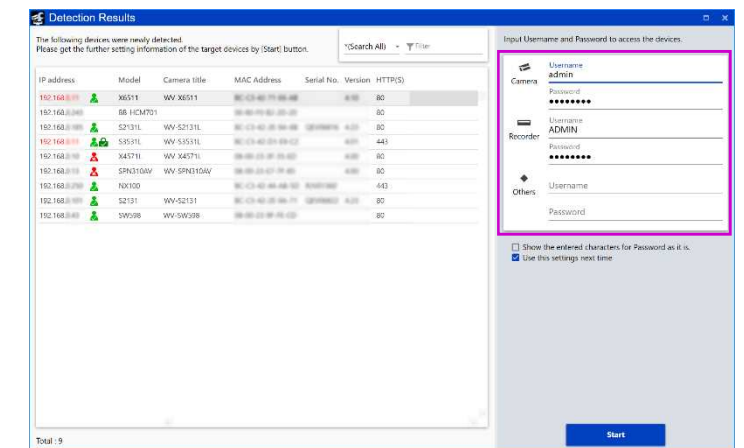


## 2. Select mode / functions



### 3. Device detection and connection

To connect to the device, you need to enter the username and password of the device.



(a)<Basic mode / Professional mode> common function

- (i)[Hamburger Icon] Switch between icon display and detailed display of the operation menu.
- (ii)[Select Menu] Select function menu.
- (iii)[Change IP Address] Set the IP address of the device.
- (iv)[Administrator Registration] Perform the initial settings of the device administrator.
- (v)[Download Files] Perform device settings / log file download  
(You can also create a configuration report)
- (vi)[Upload Files] Upload the setting file to the device.
- (vii)[Update Firmware] Update the firmware on the device.
- (viii)[Camera Restart] Restart the cameras.

(b)<Professional mode> function

- (i)[Configure Cameras] Set multiple cameras from one unit.
- (ii)[Configure Recorders] Configure recorder settings (offline)  
(Use the basic mode "Upload Files" to send settings to the device.)
- (iii)[Send a CGI List] Send CGI list to device
- (iv)[Configure IEEE802.1X] Manage 802.1x certificates for devices.
- (v)[Ext. Software Management] Configure extension software / license settings.
- (viii)[Camera Reset / Restart] Initialize / restart the cameras.
- (ix)[Status of Cameras] Retrieves / displays of camera operating status.

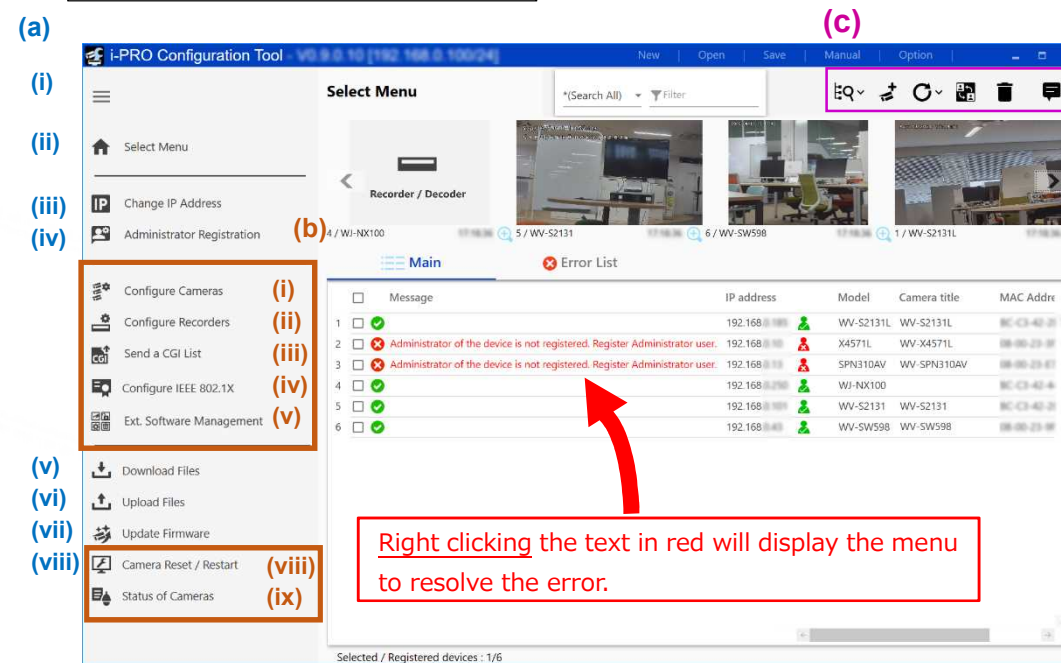
(c)Operation menu












- (i)[Auto Device Detection] Devices on your own / other subnets can be detected and added
- (ii)[Manual Device Addition] Add cameras (offline)
- (iii)[Reload] Update the device list / thumbnail image view.
- (iv)[Credential Settings]  
Change Username and Password to access the devices.
- (v)[Delete Devices] Delete the devices specified in the device list.
- (vi)[Notice] If there is notification, it will be displayed at the bottom right of the screen.

Please note that the function for changing the settings of devices such as cameras and recorders is in "professional" mode so that you will not accidentally change the detailed settings of your device.

#### 4. Main (Home) Screen




Item	Description
Common to Communications	 Waiting order to start communication with target device.
	 Communication with target device is in progress.
	 Communication with the target device successfully.
	 Communication with the target device failed.
Administrator Registration Status	 Administrator is already registered devices.
	 Administrator is not registered devices.
	 Administrator state unknown devices. (Uncommunicated device)
Failover	 The operation is currently running in the failover mode.
Communication Status	 Devices under HTTPS communication status. (There is no icon for HTTP communication status)

## Professional mode

## Basic mode

[Download Files](#)

 Download Files

It is possible to download the selected files. When [Start] button is clicked, Download Files will be started. Are you sure to continue?

\* Please use the "Log Files" only when the manufacturer requests to send the log.

- ☒ Configuration Files
  - ☐ JPEG still images (For cameras only)
  - ☐ Log Files
- ☐ Create a new Report of the Device List and Image View.

## Upload Files

Select "Category" of the devices to which the configuration files is to be uploaded. When [Start] button is clicked, Upload Files will be started. Are you sure to continue?

Category  
Recorder Configuration File

File name


☐ Overwrite network settings.

### Update Firmware

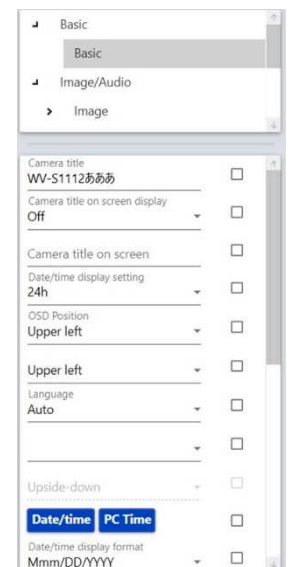
Select firmware folder

Folder

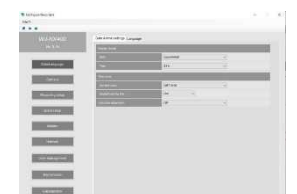
---



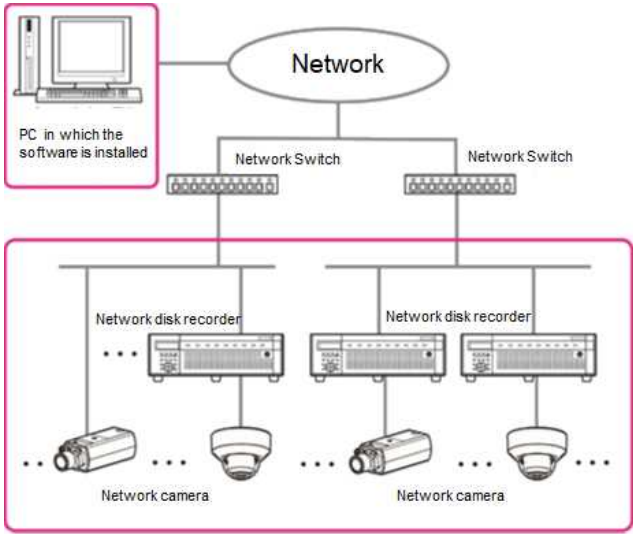
## Configure Cameras



## Configure Recorders



Preface
i-PRO Configuration Tool is the software that is designed to configure the settings of network disk recorders, network interface units (encoders) and network cameras using a PC via a network. This software is assumed to be used by system design and network management experts. Refer to the provided "Available function list for each compatible device" (PDF file) about the compatible devices.
System configuration diagram



It is recommended to install this software on a PC that meets the following system requirements.

OS <sup>*1</sup>	Microsoft® Windows® 10 Pro 64-bit <sup>*2, *3</sup> Microsoft® Windows® 10 Pro 32-bit <sup>*3</sup> Microsoft® Windows® 8.1 Pro 64-bit <sup>*2</sup> Microsoft® Windows® 8.1 Pro 32-bit
CPU	Intel® Core™ i5 2.5 GHz or faster
Memory	4 GB or more
Required hard disk space	90 MB of disk space is necessary for installation of this software. <sup>*4</sup> Microsoft® .NET Framework 4.6 and Microsoft® Visual C++ Redistributable Packages for Visual Studio 2013 are required to run this software. When they are not installed on a PC, additional 4.5 GB of disk space is necessary for installation.
Monitor	1280 x 800 pixels or more 24-bit True color or better
Network interface	10/100 Mbps Network interface card must be installed. <sup>*5</sup>

<sup>\*1</sup>: This software is designed based on the default style or the font size of Microsoft® Windows® 8.1 and Microsoft® Windows® 10. It is not recommended to change the display style or the font size smaller-100% from the default. When the display style or the font size is changed from the default, it may be possible that the layout of this software collapses. If this software is not displayed correctly, change the font size to Small-100%.

<sup>\*2</sup>: Operates in WOW64 (32-bit mode).

<sup>\*3</sup>: Supports "Desktop Mode" only.

<sup>\*4</sup>: It is necessary to prepare other disk space exclusively as storage for files downloaded from the devices in addition to the required disk space for installation of this software.

<sup>\*5</sup>: The network settings on the PC must meet those of the network environment where the PC is connected.

**Important:**

- This software must be installed or started by an administrator of the PC. Otherwise, any problems will not be covered by the warranty.
- For installation, be sure to execute it from "setup.exe" with the zip file fully expanded.  
It is not possible to install from a state where the contents are only visible with the without extracting the zip file.
- Do not use other applications, especially heavy load types, while this software is running. Otherwise, the CPU overload and the shortage of resources will cause malfunction and insufficient performance. In order to avoid the conflict, please do not launch at the same time with the following software.  
EasyIpSetup (included Camera's CD-ROM), WV-ASM100, WV-ASM200, WV-ASM300
- Enter 1-byte alphanumeric characters for user names. If 2-byte characters are included, installation may fail.

Trademarks and registered trademarks
• Adobe and Reader are either registered trademarks or trademarks of Adobe Systems Incorporated in the United States and/or other countries. • Microsoft, Windows, Internet Explorer, ActiveX and DirectX are either registered trademarks or trademarks of Microsoft Corporation in the United States and other countries. • Intel and Core i5 are trademarks or registered trademarks of Intel Corporation or its subsidiaries in the United States and other countries. • Other names of companies and products contained in these operating instructions may be trademarks or registered

trademarks of their respective owners
Copyright
Except for open source software licensed under GPL/LGPL and so on, distributing, copying, disassembling, reverse compiling, reverse engineering, and also exporting in violation of export laws of the software provided with this product, are all expressly prohibited.
Disclaimer of warranty
IN NO EVENT SHALL MATSUSHITA ELECTRIC INDUSTRIAL CO., LTD. BE LIABLE TO ANY PARTY OR ANY PERSON, EXCEPT FOR REPLACEMENT OR REASONABLE MAINTENANCE OF THE PRODUCT, FOR THE CASES, INCLUDING BUT NOT LIMITED TO BELOW: (1)ANY DAMAGE AND LOSS, INCLUDING WITHOUT LIMITATION, DIRECT OR INDIRECT, SPECIAL, CONSEQUENTIAL OR EXEMPLARY, ARISING OUT OF OR RELATING TO THE PRODUCT; (2)PERSONAL INJURY OR ANY DAMAGE CAUSED BY INAPPROPRIATE USE OR NEGLIGENT OPERATION OF THE USER; (3)UNAUTHORIZED DISASSEMBLE, REPAIR OR MODIFICATION OF THE PRODUCT BY THE USER; (4)ANY PROBLEM, CONSEQUENTIAL INCONVENIENCE, OR LOSS OR DAMAGE, ARISING OUT OF THE SYSTEM COMBINED BY THE DEVICES OF THIRD PARTY;
Open Source Software

This product contains open source software as follows.

Software name	Copyright	License
System.Data.SQLite	System.Data.SQLite	MS-PL
DotNetZip	DotNetZip	MS-PL
MahApps.Metro	Mahapps	MIT License (MIT)
ControlzEx	Jan Karger, Bastian Schmidt	MIT License (MIT)
MaterialDesignThemes	James Willock, Mulholland Software and Contributors	MIT License (MIT)
MaterialDesignThemes.MahApps	James Willock, Mulholland Software and Contributors	MIT License (MIT)
MaterialDesignColors	James Willock, Mulholland Software and Contributors	MIT License (MIT)
Dragablz	James Willock, Mulholland Software and Contributors	MIT License (MIT)
SharpZipLib	SharpZipLib Contributors	MIT License (MIT)

The full text of the corresponding license terms is below.

**Microsoft Public License (MS-PL)**

This license governs use of the accompanying software. If you use the software, you accept this license. If you do not accept the license, do not use the software.

1. Definitions

The terms "reproduce," "reproduction," "derivative works," and "distribution" have the same meaning here as under U.S. copyright law.

A "contribution" is the original software, or any additions or changes to the software.

A "contributor" is any person that distributes its contribution under this license.

"Licensed patents" are a contributor's patent claims that read directly on its contribution.

2. Grant of Rights

(A) Copyright Grant- Subject to the terms of this license, including the license conditions and limitations in section 3, each contributor grants you a non-exclusive, worldwide, royalty-free copyright license to reproduce its contribution, prepare derivative works of its contribution, and distribute its contribution or any derivative works that you create.

(B) Patent Grant- Subject to the terms of this license, including the license conditions and limitations in section 3, each contributor grants you a non-exclusive, worldwide, royalty-free license under its licensed patents to make, have made, use, sell, offer for sale, import, and/or otherwise dispose of its contribution in the software or derivative works of the contribution in the software.

3. Conditions and Limitations

- (A) No Trademark License- This license does not grant you rights to use any contributors' name, logo, or trademarks.  
(B) If you bring a patent claim against any contributor over patents that you claim are infringed by the software, your patent license from such contributor to the software ends automatically.  
(C) If you distribute any portion of the software, you must retain all copyright, patent, trademark, and attribution notices that are present in the software.

(D) If you distribute any portion of the software in source code form, you may do so only under this license by including a complete copy of this license with your distribution. If you distribute any portion of the software in compiled or object code form, you may only do so under a license that complies with this license.

(E) The software is licensed "as-is." You bear the risk of using it. The contributors give no express warranties, guarantees or conditions. You may have additional consumer rights under your local laws which this license cannot change. To the extent permitted under your local laws, the contributors exclude the implied warranties of merchantability, fitness for a particular purpose and non-infringement.

**MIT License (MIT)**

Copyright (c) 2016 MahApps

Unless indicated otherwise on a per-file basis all source and documentation herein is licensed under the MIT license.

Some included code is licensed under MS-PL which is compatible with the terms of MIT.

Permission is hereby granted, free of charge, to any person obtaining a copy of this software and associated documentation files (the "Software"), to deal in the Software without restriction, including without limitation the rights to use, copy, modify, merge, publish, distribute, sublicense, and/or sell copies of the Software, and to permit persons to whom the Software is furnished to do so, subject to the following conditions:

The above copyright notice and this permission notice shall be included in all copies or substantial portions of the

Software.

THE SOFTWARE IS PROVIDED "AS IS", WITHOUT WARRANTY OF ANY KIND, EXPRESS OR IMPLIED, INCLUDING BUT NOT LIMITED TO THE WARRANTIES OF MERCHANTABILITY, FITNESS FOR A PARTICULAR PURPOSE AND NONINFRINGEMENT. IN NO EVENT SHALL THE AUTHORS OR COPYRIGHT HOLDERS BE LIABLE FOR ANY CLAIM, DAMAGES OR OTHER LIABILITY, WHETHER IN AN ACTION OF CONTRACT, TORT OR OTHERWISE, ARISING FROM, OUT OF OR IN CONNECTION WITH THE SOFTWARE OR THE USE OR OTHER DEALINGS IN THE SOFTWARE.

The MIT License (MIT)

Copyright (c) James Willock, Mulholland Software and Contributors

Permission is hereby granted, free of charge, to any person obtaining a copy of this software and associated documentation files (the "Software"), to deal in the Software without restriction, including without limitation the rights to use, copy, modify, merge, publish, distribute, sublicense, and/or sell copies of the Software, and to permit persons to whom the Software is furnished to do so, subject to the following conditions:

The above copyright notice and this permission notice shall be included in all copies or substantial portions of the Software.

THE SOFTWARE IS PROVIDED "AS IS", WITHOUT WARRANTY OF ANY KIND, EXPRESS OR IMPLIED, INCLUDING BUT NOT LIMITED TO THE WARRANTIES OF MERCHANTABILITY, FITNESS FOR A PARTICULAR PURPOSE AND NONINFRINGEMENT. IN NO EVENT SHALL THE AUTHORS OR COPYRIGHT HOLDERS BE LIABLE FOR ANY CLAIM, DAMAGES OR OTHER LIABILITY, WHETHER IN AN ACTION OF CONTRACT, TORT OR OTHERWISE, ARISING FROM, OUT OF OR IN CONNECTION WITH THE SOFTWARE OR THE USE OR OTHER DEALINGS IN THE SOFTWARE.

Network Security
------------------

As you will use this product connected to a network, your attention is called to the following security risks.

(1)Leakage or theft of information through this product

(2)Use of this product for illegal operations by persons with malicious intent

(3)Interference with or stoppage of this product by persons with malicious intent

It is your responsibility to take precautions such as those described below to protect yourself against the above network security risks.

•Use this product in a network secured by a firewall, etc.

•If this product is connected to a network that includes PCs, make sure that the system is not infected by computer viruses or other malicious entities (using a regularly upgraded anti-virus program, anti-spyware program, etc.).

•Protect your network against unauthorized access by restricting users to those who log in with an authorized user name and password.

•Apply measures such as user authentication to protect your network against leakage or theft of information, including image data, authentication information (user names and passwords), alarm mail information, FTP server information.

**For U.S. and Canada:**

**Panasonic i-PRO Sensing Solutions Corporation of America**  
800 Gessner Rd, Suite 700 Houston, TX 77024  
<https://www.security.us.panasonic.com/>

**Panasonic Canada Inc.**  
5770 Ambler Drive, Mississauga, Ontario, L4W 2T3 Canada  
1-877-495-0580  
<https://www.panasonic.com/ca/>

**For Europe and other countries:**

**Panasonic Corporation**  
<http://www.panasonic.com>

Panasonic i-PRO Sensing Solutions Co., Ltd.  
Fukuoka, Japan

Authorized Representative in EU:

Panasonic Testing Centre  
Panasonic Marketing Europe GmbH  
Winsbergring 15, 22525 Hamburg, Germany

© Panasonic i-PRO Sensing Solutions Co., Ltd. 2021