

Facial Recognition Server Software WV-ASF950 Series

Instructions how to upgrade from V3.xx to V3.xx

Outline

The upgrade uses the tools as follow;

- ConfigTool : WV-ASF950 ConfigurationTool (Shortcut on desktop)
- Update tool: UpdateTool_for_ASF950_CH_R_V3_xx_to_V3_xx
 - * Check version file by using notepad, etc. ("C:\ASF900\version")
 - * Do not execute each tool directly from USB memory, etc. Please execute after copying to a local disk such as the Desktop.

Procedure outline:

No	Procedure	Contents	Tool for use
1	Stop the system	Stop the system, and confirm the server type is master or slave server	Config tool
2	Update the system	Copy new files and update system information	Update tool
3	Start the system	Confirm system version and start the system	Config tool
4	Update camera information	Updates the camera information to detect face mask	Config tool

Also, install the Error Notification Tool on any PC to check the server operation status.

* If the version is less than 2.00, start from installation. In the case of version 2.10 or later, it is necessary to uninstall the existing Error Notification Tool. The registered server information will remain after uninstallation, so not need to register the server again after installing the latest version.

Procedure outline:

No	Procedure	Contents	Target version
1	Uninstall	Uninstall the previous version of the Error Notification Tool.	2.10 or later
2	Install	Install the Error Notification Tool on any PC.	All version
3	Register server	Register the server in the Error Notification Tool.	Less than 2.00

1

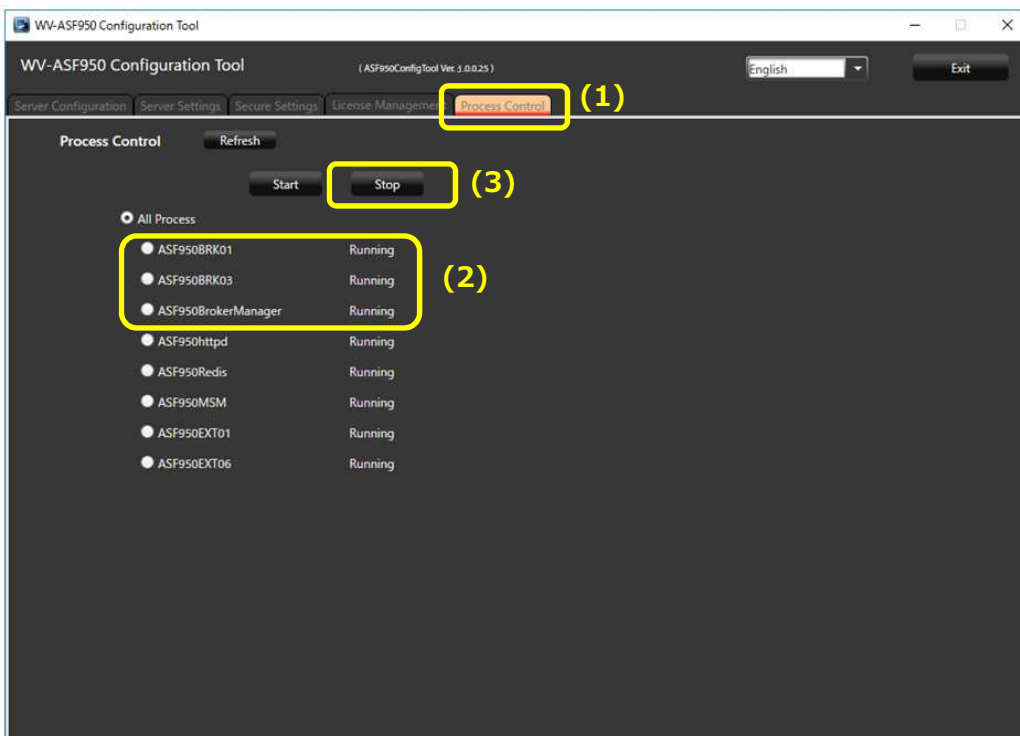
2

3

4

1. Stop the system

- (1) Run “WV-ASF950 Configuration Tool” and click “Process Control” tab.
- (2) Check whether the server type is master server or slave server.
“Not Installed” is shown in the rectangle (2) of following figure, this is slave server.
Otherwise this is master server.
(The following figure is a sample of master server)
- (3) Make sure “All Process” is selected, then click “Stop” button.



- (4) Make sure all processes are “Stopped”, then click “Exit” button.



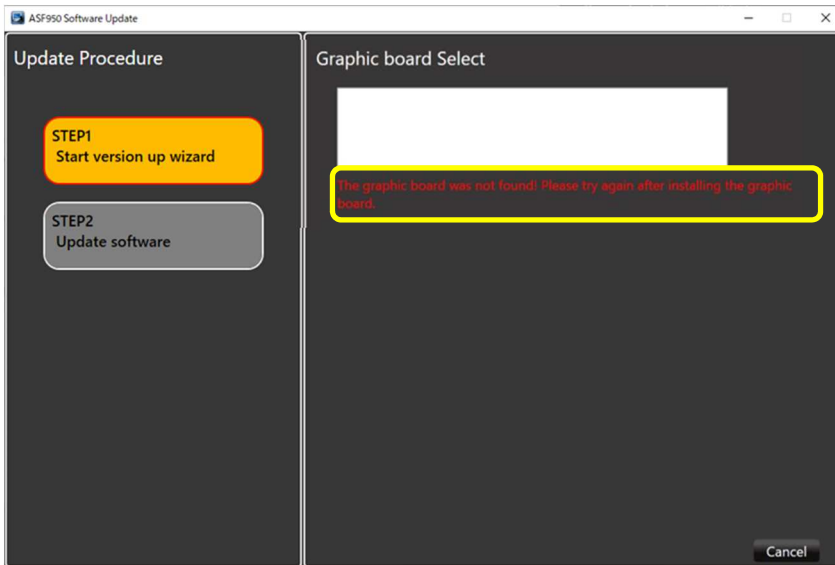
2. Update the system

Execute Copy new files and update system information by update tool.

(1) Run “ASF950UpdateTool.exe” in the folders of “UpdateTool_for_ASF950_CH_R_V3_xx_to_V3_xx” folder.

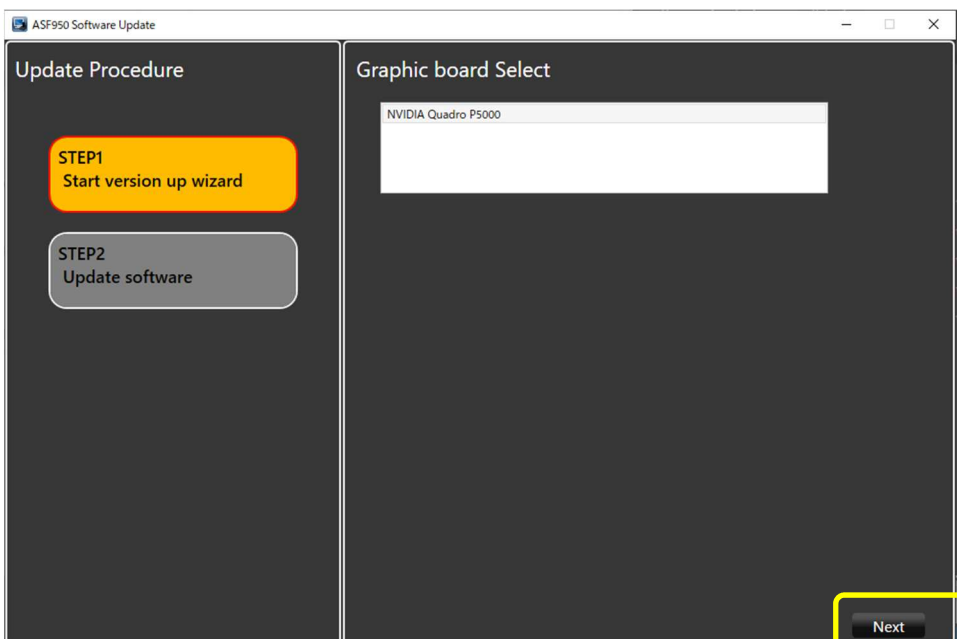
* Please execute after copying to a local disk such as the Desktop

(2) Graphic board Select displays a list of GPUs used by the server.
If the driver is not supported, a [Cancel] button with a warning will be displayed.



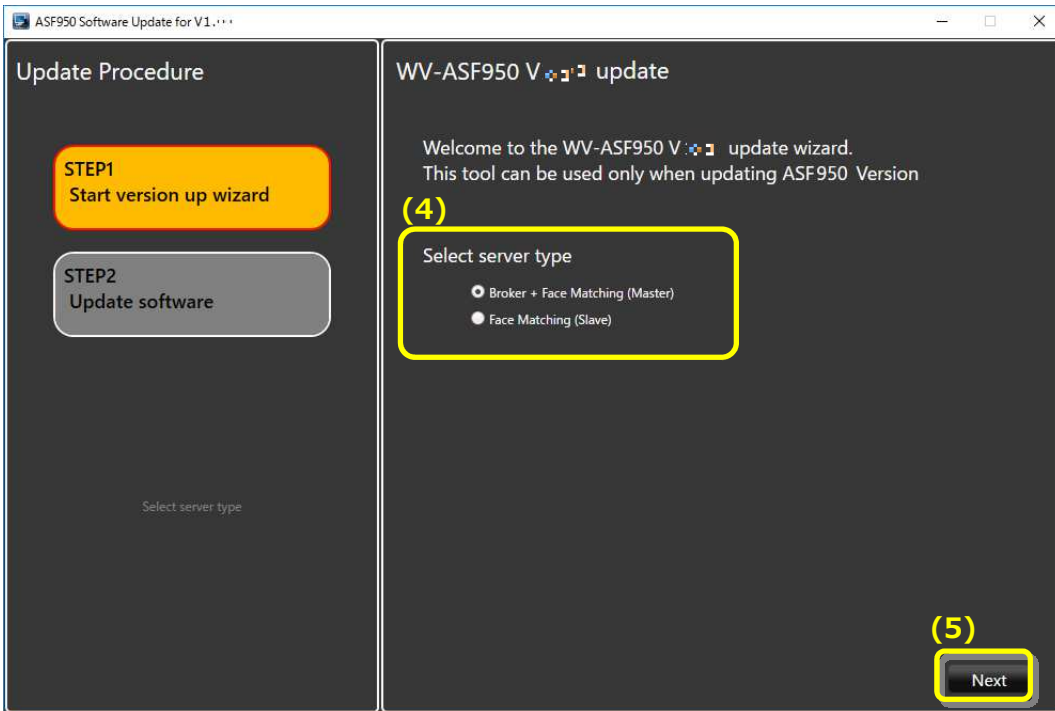
After updating the driver version to 425.31 or higher, start the advanced tool again.

(3) Click “Next” button.



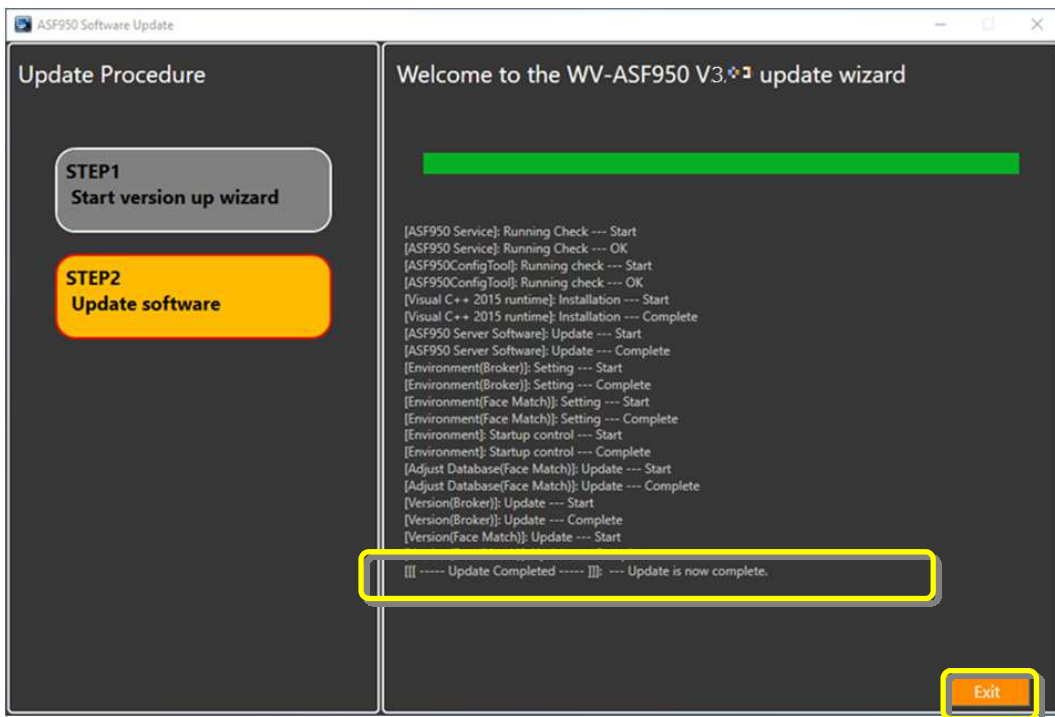
(4) In "Select server type", the automatically determined server type (master or slave) is selected. Confirm that it matches what you confirmed in "1. Stop the system (2)".

(5) Click "Next" button.

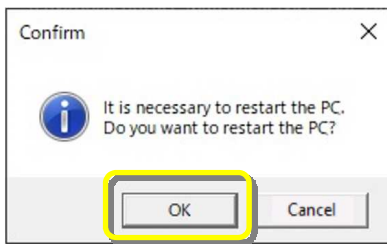


(6) Installation and configuration of the new software will begin.

When "Update Completed" is displayed and the installation is completed, click the Exit button to finish the upgrade.



(7) Follow the instructions in the dialog to restart server PC.



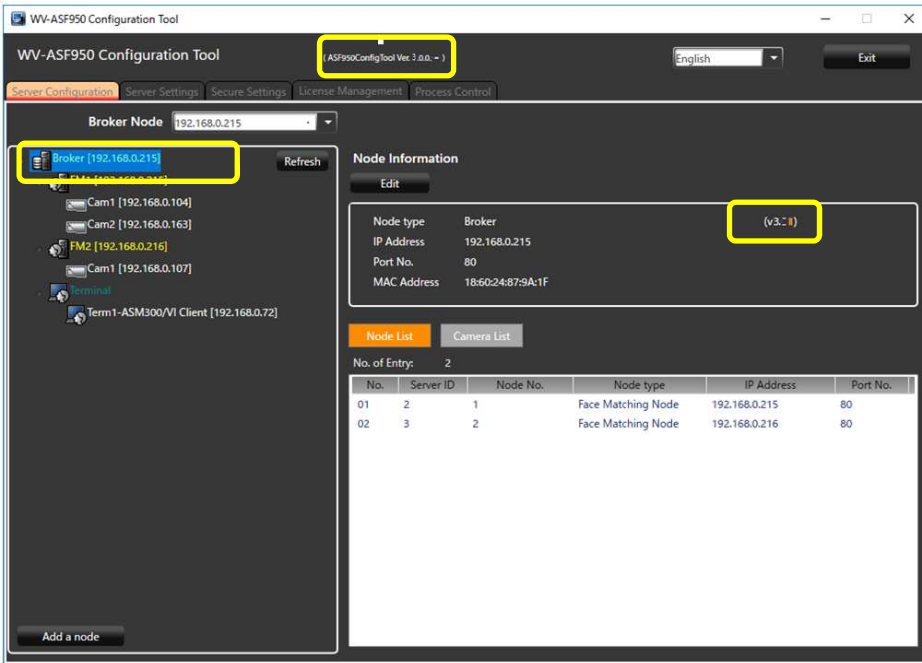


3. Start the system

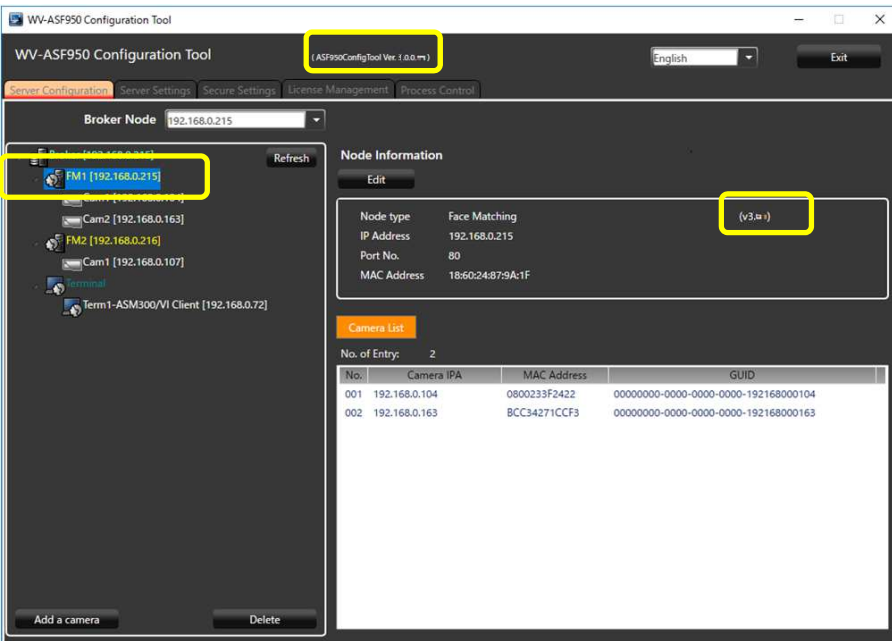
- (1) Run "WV-ASF950 Configuration Tool"
- (2) Check that config tool version is "V3.xx.x.xxxx".
And check that server version is "V3.xx"

[Master server]

- 1. Check the Broker server version.

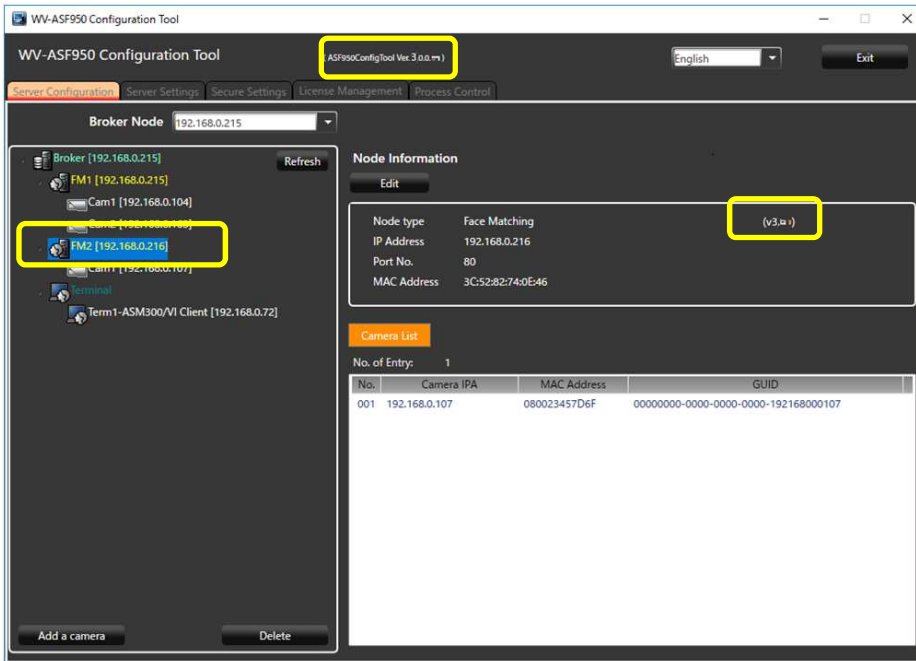


- 2. Check the Face Matching server (FM1) version.



[Slave server]

Check the Face Matching server (FM2 or later) version.



(3) Restat the PC.

(4) After restarting th PC, run “WV-ASF950 Configuration Tool” and click “Process Control” tab. Make sure all processes are “Running”, then click “Exit” button.

1

2

3

4

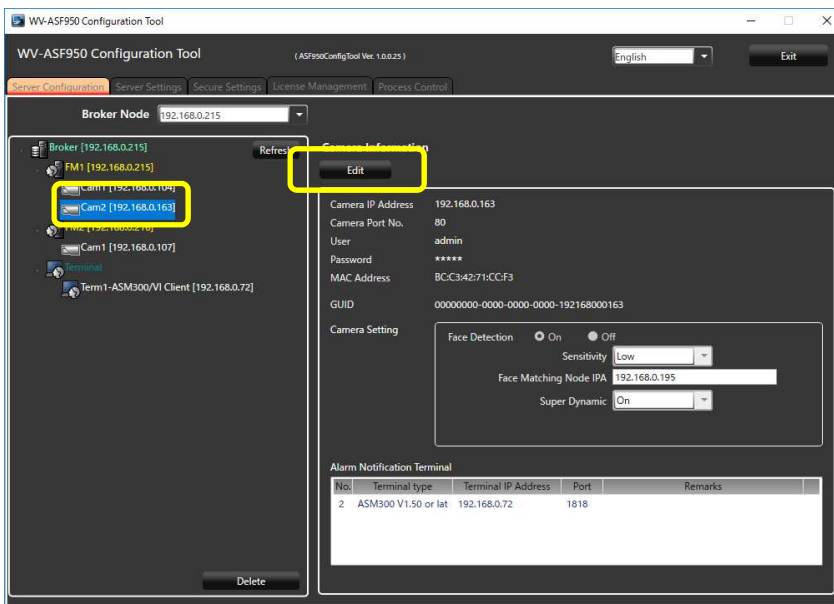
4. Update camera information

When using the face mask detection function of the camera (supported cameras only in i-PRO EXTREME series), it is necessary to update the camera information after camera firmware is updated in V2.00 or later.

(1) Run “WV-ASF950 Configuration Tool” **on master server.**

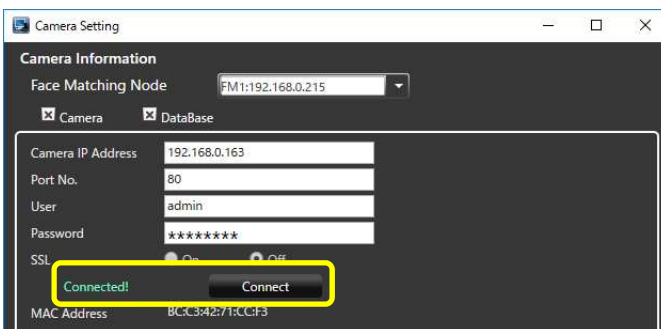
(2) Select “Server Configuration” tab.

Select camera in device tree for updating information and click “Edit” button.
Camera setting window is shown.



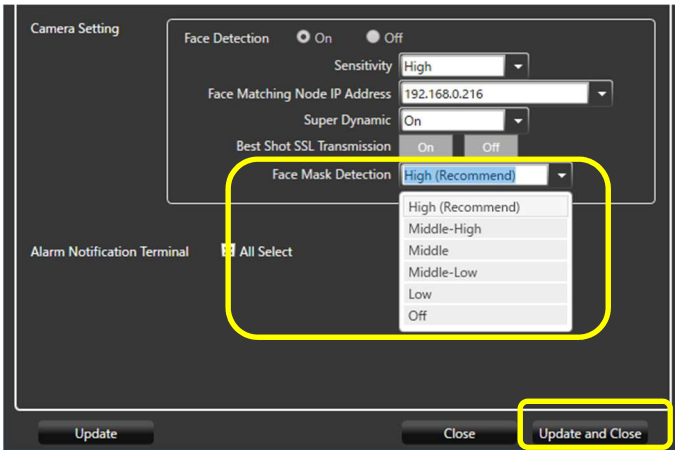
(3) Click “Connect” button.

“Connected” is shown, and configuration tool connects the camera and gets camera information.



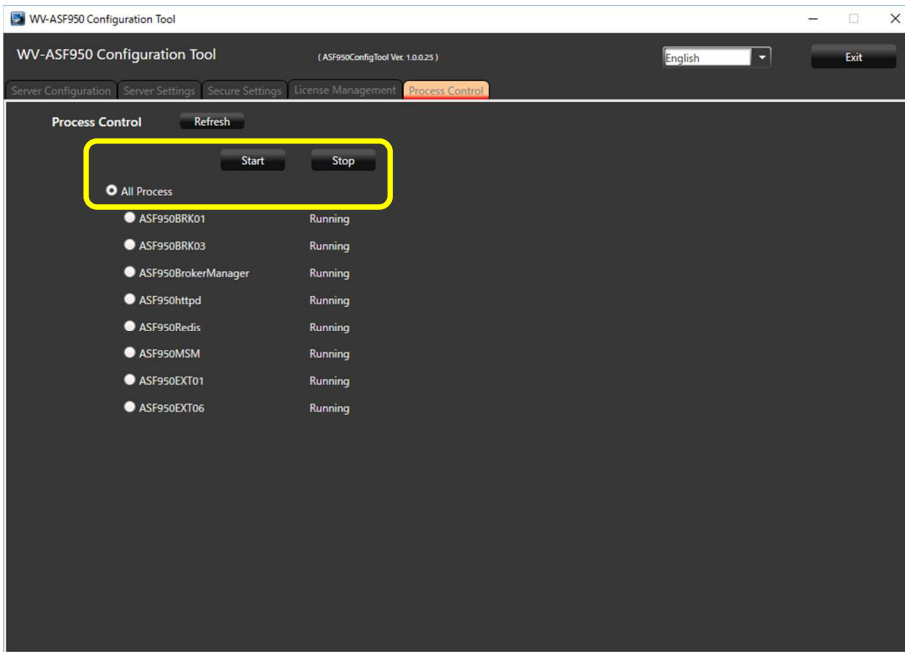
Face Mask Detection menu is shown. Select Face Mask Detection level in pull-down menu.

* High level is recommended.
And Click "Update and Close" button.



(4) Repeat steps (2)-(3) for other cameras as well.

(5) On "Process Control" tab, stop all processes and start them again in order to reflect the setting.



(6) If there is **another slave server**, stop all processes and start them again.

1

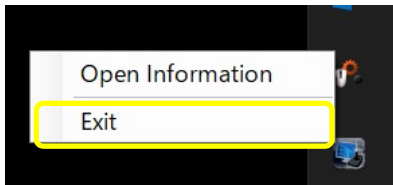
2

3

1. Uninstall

Perform this step only when there is a previous version of the Error Notification Tool (version 2.10 or later).

- (1) Right-click the icon displayed in the lower right corner of the Desktop, click "Exit", and click "Yes" on the exit confirmation message to exit the tool.



- (2) Select [Control Panel]-[Uninstall a program] or [Programs and Features].
- (3) Select "WV-ASF950 Error Notification Tool" from the programs displayed in the [Uninstall or change a program] window, and click the "Uninstall" button.
- (4) Follow the on-screen instructions to uninstall.

* Not need to restart the PC after uninstalling.

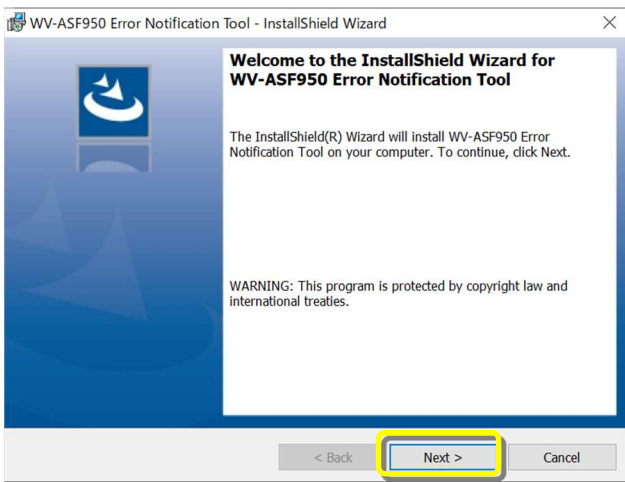


2. Install

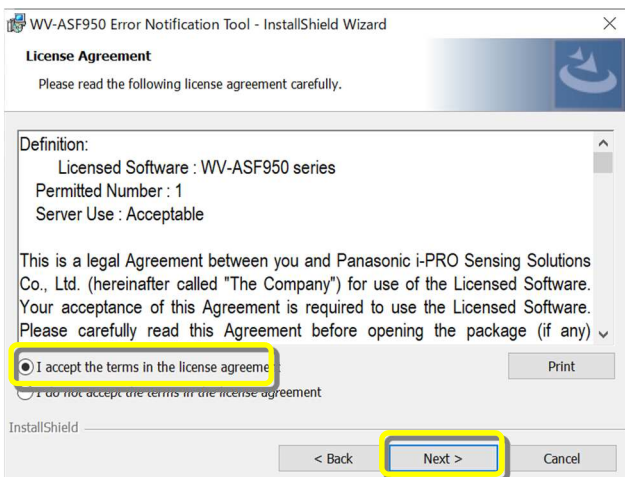
- (5) Copy the “UpdateTool_for_ASF950_CHR_V3_xx_to_V3_xx\05_Error Notification Tool” folder to any PC.
- (6) Execute “WV-ASF950_Error_Notification_Tool_Setup_vxxxx.exe” in the “05_Error Notification Tool” folder on the copied PC.

* xxxx contains version information.

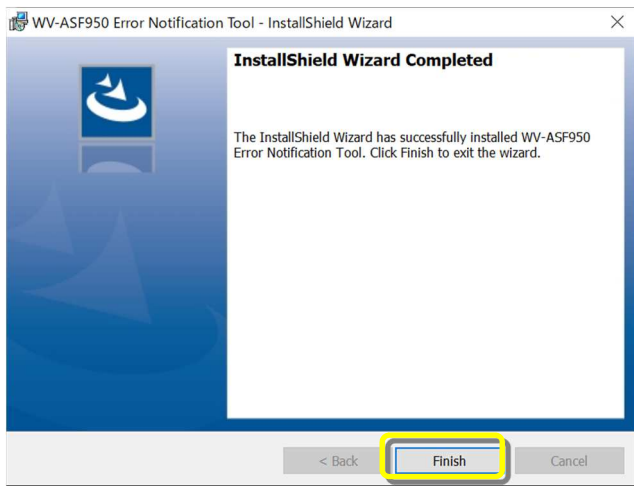
- (7) Click “Next >” button.



- (8) Select “I accept the terms in the license agreement” and click “Next >” button.



- (9) Installation of the Error Notification Tool starts. When the installation is completed, click the “Finish” button to finish.



1

2

3

3. Register server

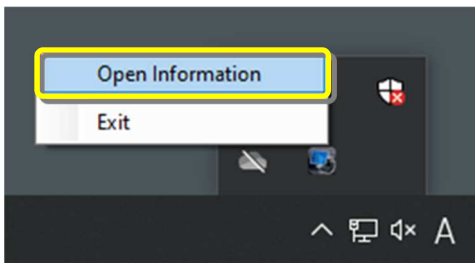
Perform this procedure when performing a new installation (less than version 2.00) or when changing the system configuration.

* In the case of version 2.10 or later, the registered server information will remain after uninstallation, so not need to register the server again after installing the latest version.

(1) Double-click "WV-ASF950 Error Notification Tool" on the Desktop to start.

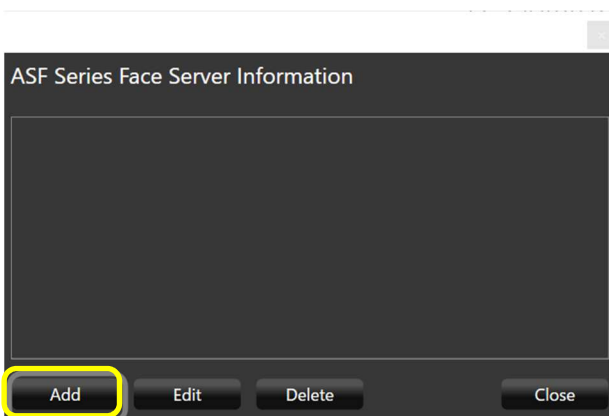
* It does not start automatically, so please execute the tool from the shortcut after installation.

(2) Right-click the icon displayed in the task tray and click "Open Information".The Error Notification Tool window will be displayed.



(3) Click "Add" button.

Server Registration window will be displayed.

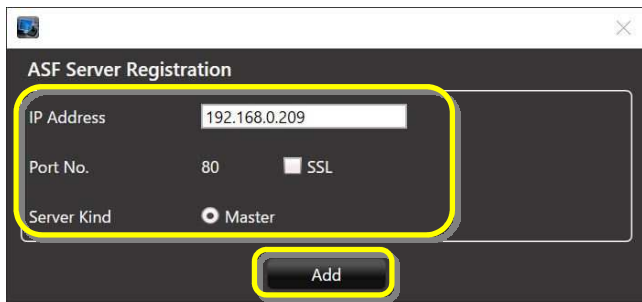


(4) Enter the IP address.

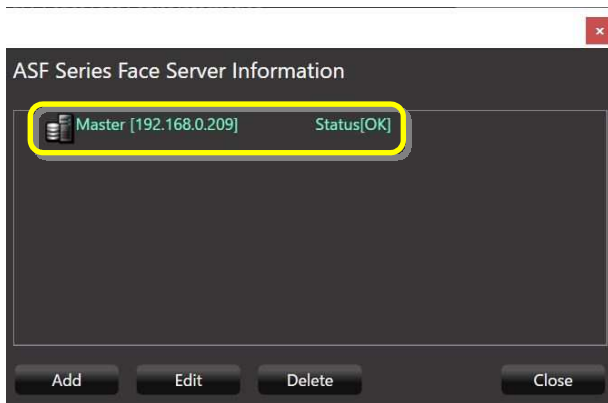
If SSL is on for the server, check "SSL".

Make sure that "Master" is checked at the server type.

After setting, click "Add" button.



Confirm that the registered master server is added to the Error Notification Tool window and "Status [OK]" is displayed.



If the status does not change to "OK", please check that the IP address is correct and there is no problem with the network device, and that the service process of the facial recognition server is running.

(5) If there is another master server or slave server, add the server by following steps (3)-(4). To add a slave server, select the master server and click the "Add" button.